

Exciting new features in Sage 100 ERP Intelligence Reporting



We've listened to your valuable feedback and included your suggestions in Sage 100 ERP 2014 Intelligence Reporting. Intelligence Reporting now installs during the Sage 100 ERP 2014 installation, allowing you to access Intelligence Reporting within the Sage 100 ERP 2014 Module Menus. The Report Designer Add-In gives you more capabilities with financial reporting, and you can now take advantage of Excel 2013.

Simpler installation and access

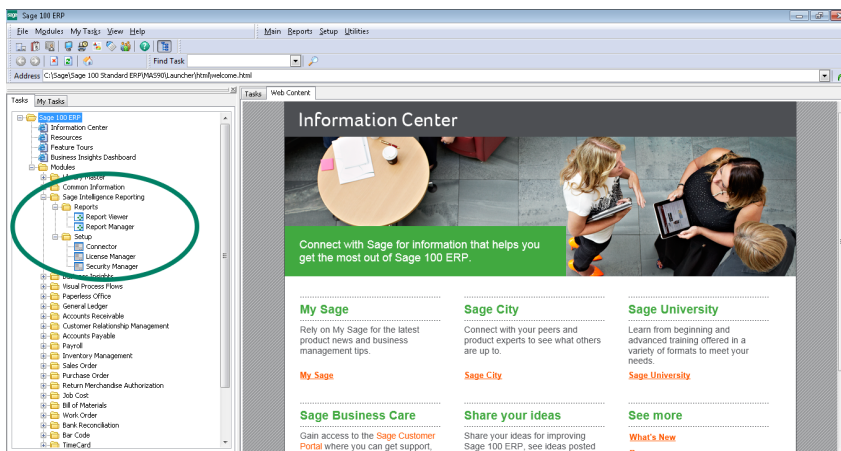
Intelligence Reporting is now installed during the Sage 100 ERP workstation installation, making installation a simpler process. You can now access Intelligence Reporting through the Module Menus toolbar and the Tasks tab in Sage 100 ERP.

Benefits

- Get better **control** of your reporting.
- **Automate** your reporting processes.
- Make better decisions through better **analysis** of your data.

Solution

- Sage 100 ERP 2014
- Sage 100 ERP Intelligence Reporting



Latest Microsoft Excel technology

Intelligence Reporting is now compatible with the 32-bit and 64-bit versions of Excel 2007, 2010 and 2013 to allow you to take full advantage of the latest Microsoft Excel functionality.

“We have increased the number of financial reports that are provided to each facility from four to six, with additional analysis provided in the reports, and still reduced the time to process them from eight hours to one hour.”

Ian C. Weight
Chief Financial Officer, RAM Enterprise, Inc

The financial Report Designer reports have been enhanced to simplify the user experience and the Report Designer Add-In reports are now included when Sage Intelligence is installed, no longer requiring a separate installation.

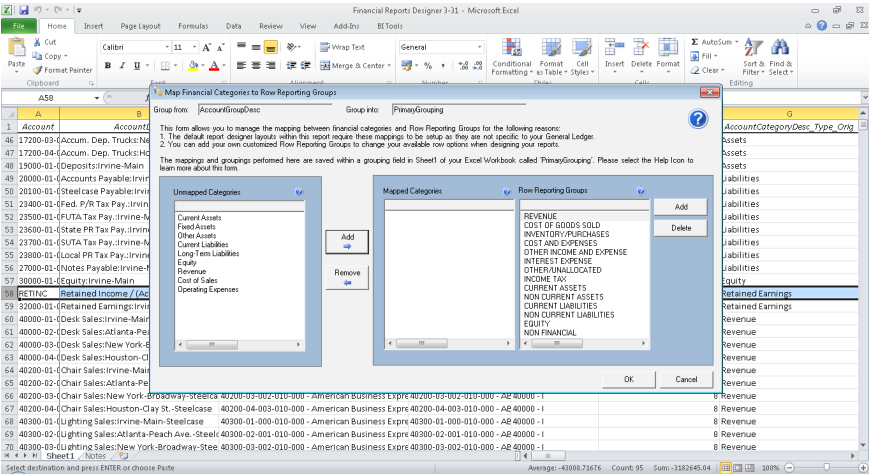
[illegible]

- It is now easier for you to rearrange rows and columns as well as find items in the Layout Generator through larger font size and alphabetical listing, helping you to create reports more easily.
- The ability for you to insert rows or columns into a specific location in a layout gives you more control and speed in designing reports.



Sage 100 ERP 2014 Intelligence Reporting

- When using the mapping capabilities in the Report Designer, you are able to add and delete row reporting groups, helping you to speed up and simplify the mapping process.



If you're more familiar with Excel, the **Report Designer Add-In** enhances your Excel experience and offers you maximum control and flexibility over your report layouts. The Report Designer Add-In gives you a quick and responsive experience when designing and viewing your financial reports through new In-Memory processing.

ABX ENTERPRISE LTD.

SUMMARY INCOME STATEMENT

Fiscal Year: 2010

Fiscal Period: 06

	Actual YTD	Original Budget YTD	Revised Budget YTD
NET SALES	6 050 251.58	0.00	0.00
COSTS AND EXPENSES			
Cost of Sales	3 717 486.61	793 718.52	807 090.37
Salary and Wage Expense	94 000.00	94 000.00	103 400.00
Operating Expenses	1 382 804.47	2 040 635.65	2 244 699.24
Interest expense	0.00	0.00	0.00
Travel Expense	95 389.09	152 982.02	168 280.22
Miscellaneous expense	21 077.81	30 596.40	33 656.04
Other Income and Expense	49.00	0.00	0.00
TOTAL COST AND EXPENSES	5 310 806.98	3 051 932.59	3 367 125.87
NET INCOME FROM OPERATIONS	739 444.60	-3 051 932.59	-3 367 125.87

FINANCIALS

formulas trees lists

Opening Balance

Closing Balance

Actual

Actual YTD

Budget

Budget YTD

Current Year

Current Period

Company Name

FINANCIALS

formulas trees lists

Opening Balance

Closing Balance

Actual

Actual YTD

Budget

Budget YTD

Current Year

Current Period

Company Name

FINANCIALS

trees lists formulas

Manage

ABX Cities

ABX Departments

FINANCIALS

lists formulas trees

Account Categories

Account Groups

Account Types

Budget Codes

Main Accounts

Accounts

ABX

Sage 100 ERP 2014 Intelligence Reporting

Transform your company's bottom line

The Sage ERP Intelligence Reporting Profitability Dashboard enables Sage 100 ERP users to quickly identify the profitability of customers, products, and salespersons based on weekly, monthly, quarterly, or annual segments.

The Profitability Dashboard allows companies to:

- Meet customer demand by identifying and focusing on high volume products.
- Quickly identify top performing salespeople.
- Make decisions quicker using meaningful graphics.

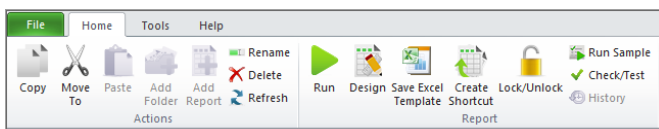


The Profitability Dashboard will be available as a report to import into Intelligence Reporting. Customers that have purchased additional Intelligence Reporting licenses and are current on their Sage Business Care or on the monthly Sage ERP Intelligence Reporting Subscription Bundle will be able to access this report.

Modernized user interface

Easy access to commonly used Report Manager and Connector features

The Report Manager and Connector module boasts a new ribbon feature with informative icons and labels for each function aiding the user in easily identifying and accessing the features that they require. Menu items have been restructured and grouped to enable users to easily identify the features that they wish to utilize. The more commonly used menu items are now accessible from the Home and Help tabs.



Demonstration Report has an updated look and feel

The demonstration reports show you the capabilities of the reports you can create and can be customized for your business needs.

About The Sage Group plc

We provide small and medium sized organisations with a range of easy-to-use, secure and efficient business management software and services - from accounting and payroll, to enterprise resource planning, customer relationship management and payments. Our customers receive continuous advice and support through our global network of local experts to help them solve their business problems, giving them the confidence to achieve their business ambitions. Formed in 1981, Sage was floated on the London Stock Exchange in 1989 and entered the FTSE 100 in 1999. Sage has over 6 million customers and more than 12,700 employees in 24 countries covering the UK & Ireland, mainland Europe, North America, South Africa, Australia, Asia and Brazil. For further information please visit www.sage.com.

For more info, visit: NA.Sage.com