



Sage Intelligence

Sage 100 ERP Intelligence Reporting
Release Notes

Table of contents

Release Notes	3
Introduction	3
New Features	3
Support for Citrix and Terminal Services Load Balanced Environments	3
New Switches Now Supported within Config.ini File	4
Support for Simplified Chinese Windows 7 OS	4
UI Modernization	4
Report Designer Add-In	13
Improvements	14
Report Manager	14
Report Designer Enhancements	21
Report Viewer Usability	25
Security Manager	25
Mapping Tool	26
Multi-Language Support	28
Resolved Issues	29
License Manager Issues	29
Report Designer Row Loading Indicator	30
Distribution Format Spelling	31
Add Accounts on a Secondary Monitor	31
Known Issues	31
The Report Manager and Connector Ribbon on Windows Vista	31

Release Notes

Introduction

These release notes contain important information about usability enhancements and resolved issues in Sage 100 ERP Intelligence Reporting 7.3.1. The notes within this document highlight the changes made between the release of Sage 100 ERP Intelligence Reporting 2013 and 2014. The Sage 100 ERP Intelligence Reporting release is focused on features which aim to improve the usability of the solution.

New Features

New Metadata Repository

As of the Sage 100 2014 release, when the software is run for the first time, the user will now be prompted to enter a new metadata repository location.

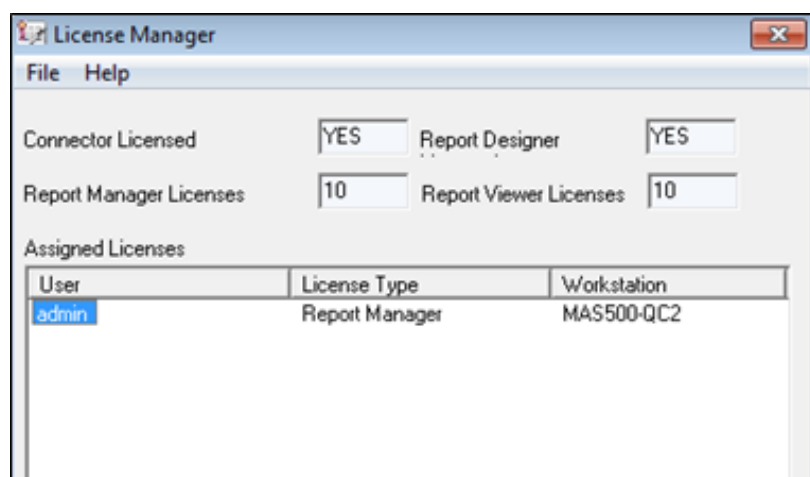
When Sage 100 2014 is open, only the latest reports will be available in the system. If the user would like to access their customized reports from Sage 100 2013. They will be required to export their reports from Sage 100 2013 and import them into Sage 100 2014.

Support for Citrix and Terminal Services Load Balanced Environments

Official support for Citrix and Terminal Services load balanced hosted environments has now been added in the form of additional configuration settings which can configure Sage Intelligence to run in a behaviour required specifically when using Sage 100 ERP Intelligence Reporting within a secured load balanced hosted environment.

NOTE: This support only applies to versions of Sage 100 ERP Intelligence Reporting which have been configured to have their licensing handled using the Integrated License Manager depicted below.

Location: Config.ini settings file.



New Switches Now Supported within Config.ini File

The following configuration switches are now supported within Sage 100 ERP Intelligence Reporting's Config.ini settings file:

DisableAddConnections
DisableViewConnectionProps
MaxCubeDimensions
HideReportRepositoryPath
HideTemplateStorageLocation

Support for Simplified Chinese Windows 7 OS

Sage 100 ERP Intelligence Reporting now functions correctly (in English) on Windows 7 with a Simplified Chinese Language Pack installed and Simplified Chinese MS Excel.

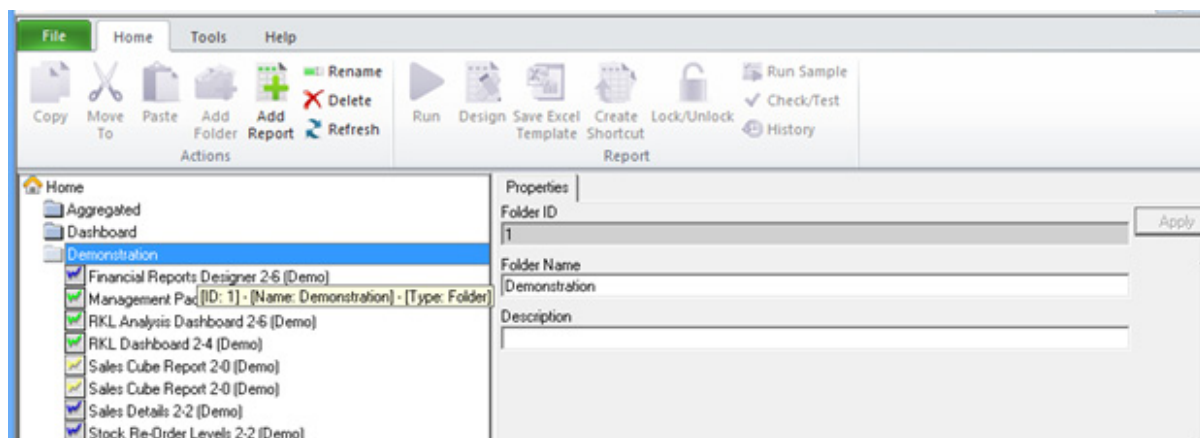
UI Modernization

Easy Access to Commonly Used Report Manager Features

Report Manager Menu items have been restructured and grouped to enable users to easily identify the features that they wish to utilize. The more commonly used menu items are now accessible from the Home and Help tabs. All existing functionality and business logic remain as in prior versions of Sage 100 ERP Intelligence Reporting.

The Home tab contains further logical grouping of features, including Action functions and Report functions.

Location: Report Manager > Home



The 'Actions' grouping contains functions that allow the user to manage reports within the Report Manager module and include the following existing Report Manager features:

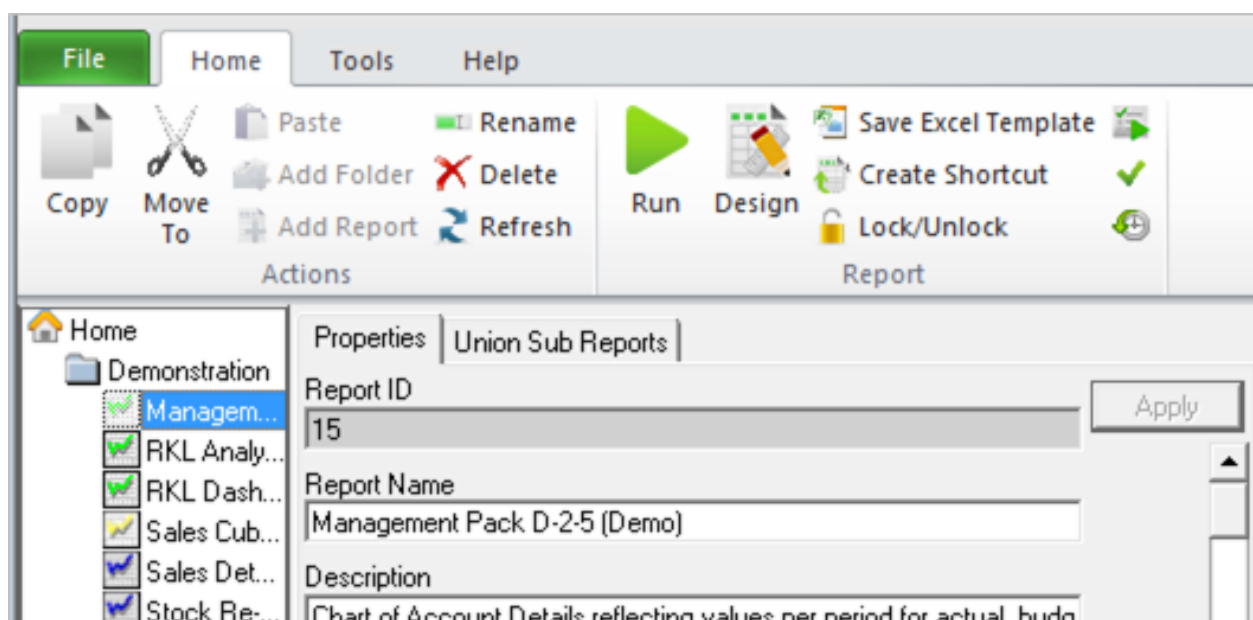
- Copy
- Move To
- Paste
- Add Folder
- Add Report
- Rename
- Delete
- Refresh

The Report grouping has functions that allow users to perform operations on reports within the Report Manager module and includes the following existing features:

- Run
- Design
- Save Excel Template
- Create Shortcut
- Lock/Unlock Report
- Run Sample
- Check/Test
- History

All icons on the Home tab ribbon are visible in windowed mode.

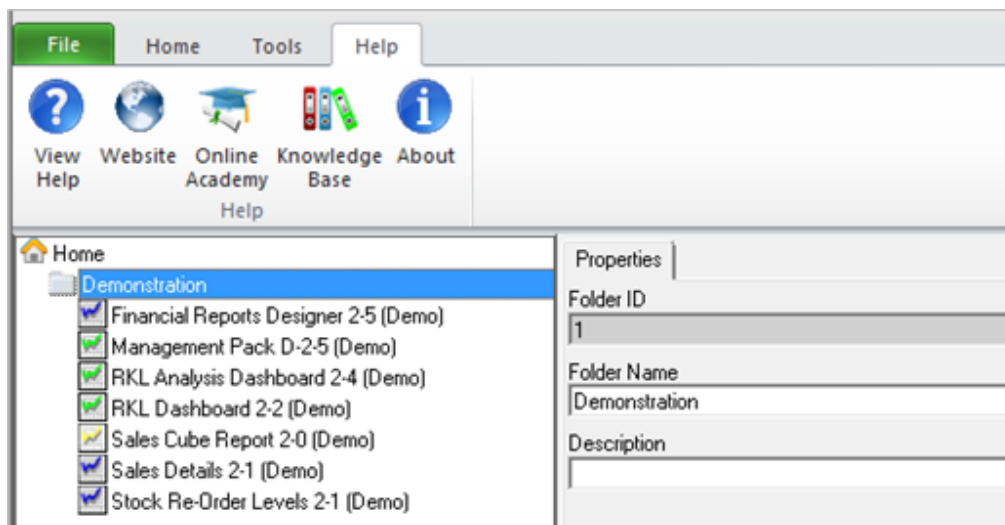
Location: Report Manager > Home



The Help tab contains features from the existing help drop down menu which are aimed at assisting the user by directing them to the help file and online communities as well as providing information on the product:

- View Help
- Website
- Online Academy
- Knowledge Base
- About

Location: Report Manager > Help

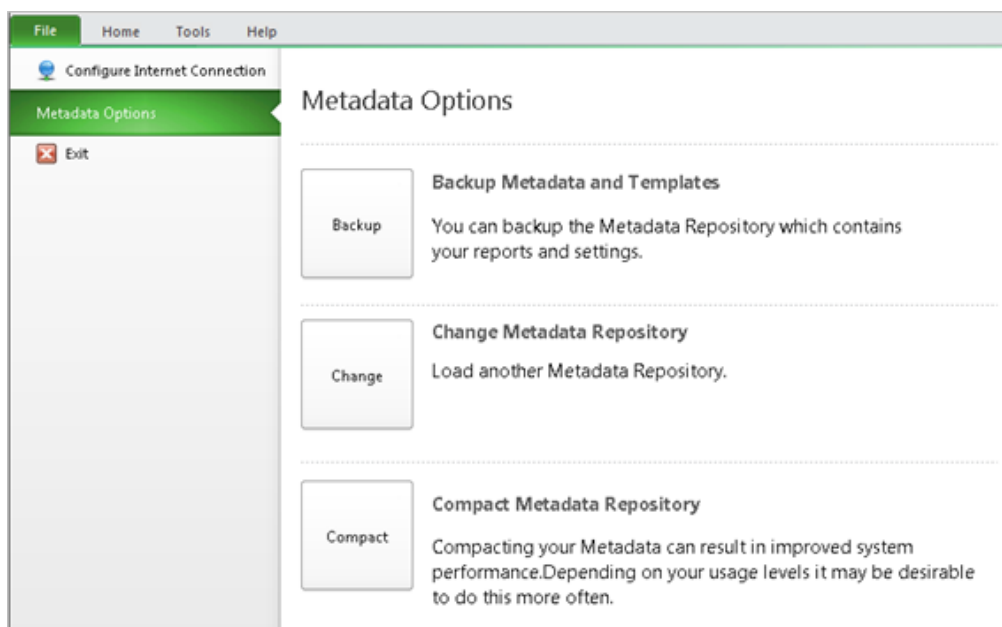


Easy Access to Less Commonly Used Report Manager Features

The Report Manager's less commonly used menu items are now accessible from the File and Tools tabs.

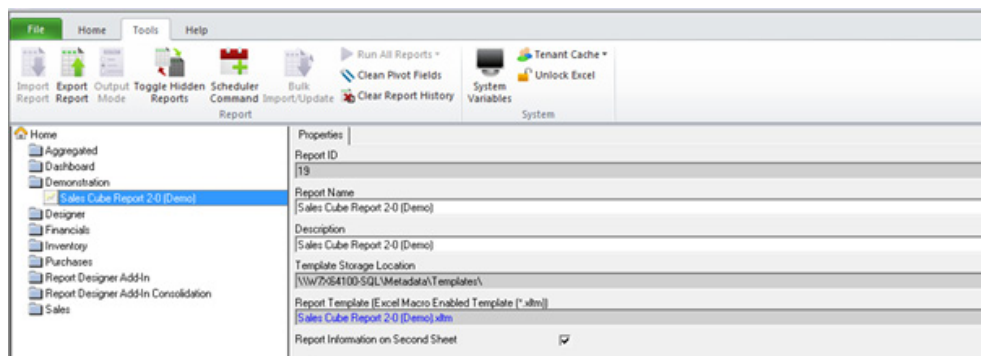
The File tab has been visually aligned to a more familiar interface for a File Menu item and contains further logical grouping of existing features including Configure Internet Connection and Metadata Options. Metadata Options allows the user to backup Metadata and Templates, change their Metadata Repository as well as compacting their Metadata to improve performance.

Location: Report Manager > File



The Tools tab contains further logical grouping of features, including Report functions and System functions. All icons on the Tools tab ribbon are visible in windowed mode.

Location: Report Manager > Tools



The Report functions grouping on the Tools tab includes the following existing report manager features which allow the user to perform more advanced management functions in the Report Manager:

- Import Report
- Export Report
- Output Mode
- Toggle Hidden Reports, previously labeled as Show/Hide Hidden reports
- Scheduler Command
- Bulk Import/Update
- Run All Reports, previously labeled as Run Report Batch
- Clean Pivot fields
- Clear Report History, previously labeled as Purge Instance History

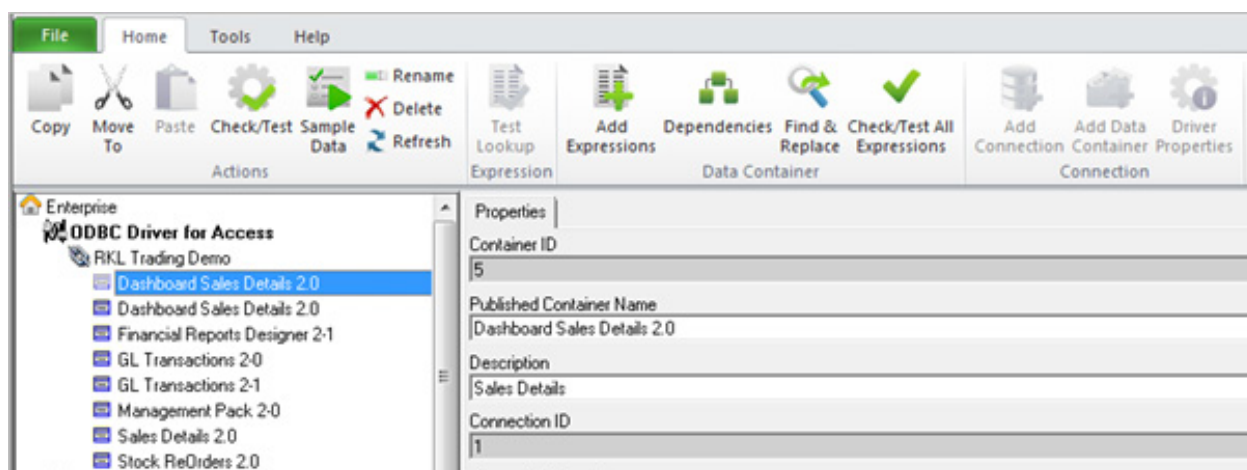
The System functions grouping on the Tools tab allows users to view System Variables, select a Tenant Cache option of open or clear, as well as Unlock Excel.

Easy Access to Commonly Used Connector Features

The Connector module boasts a new Ribbon feature with informative icons and labels for each feature promoting ease of use.

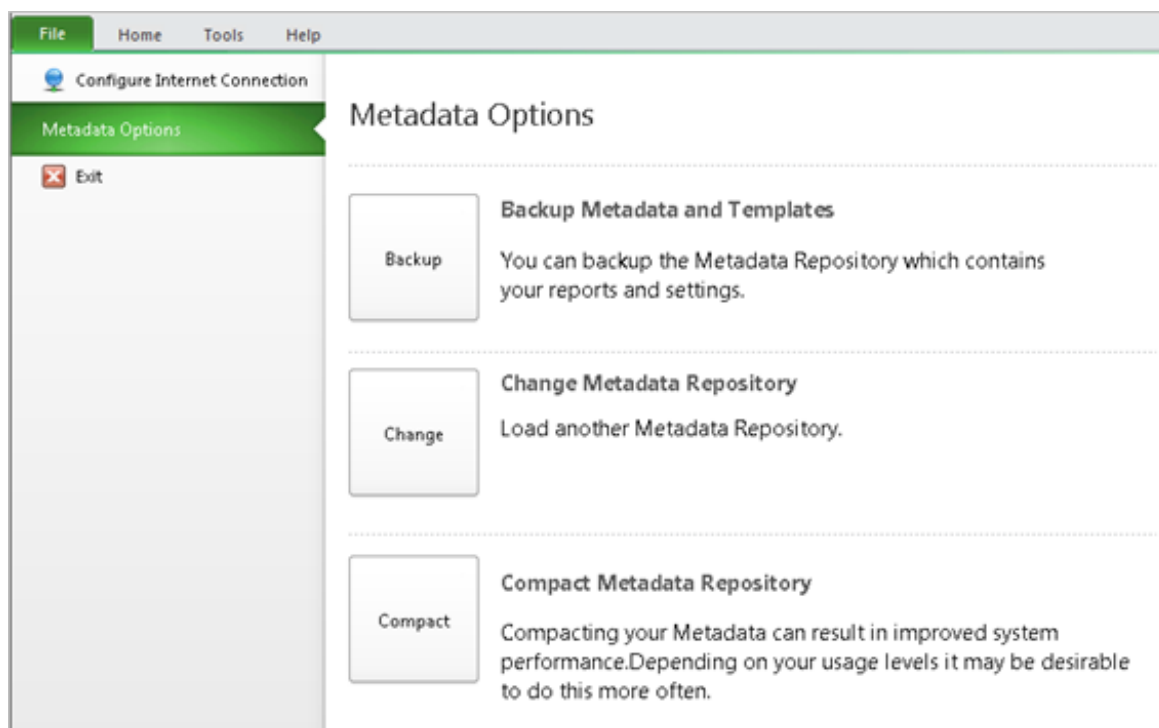
Connector Menu items have been restructured and grouped to allow users to more easily identify the features they wish to use. The more commonly used menu items are now accessible from the File, Home and Help tabs.

Location: Connector > Home



The Connector File tab has been visually aligned to a more familiar interface for a File Menu and contains further logical grouping of existing features including Configure Internet Connection and Metadata Options. Metadata Options allows the user to Backup Metadata and Templates, change their Metadata Repository as well as compacting their Metadata to improve performance.

Location: Connector > File



The connector Home tab contains further logical grouping of features, including Action functions, Expression functions, Data Container functions and Connection Functions. All icons on the Home tab ribbon are visible in windowed mode.

Actions Functions grouping includes basic container and expression management features allowing for the ability to:

- Copy
- Move To
- Paste
- Check/Test
- Sample Data
- Rename
- Delete
- Refresh

Expression Function grouping includes the ability to perform a Test Lookup for Expressions.

Data Container functions grouping allows users to modify containers' expressions and includes the following existing Connector features:

- Add Expressions
- Dependencies
- Find and Replace
- Check/Test All Expressions

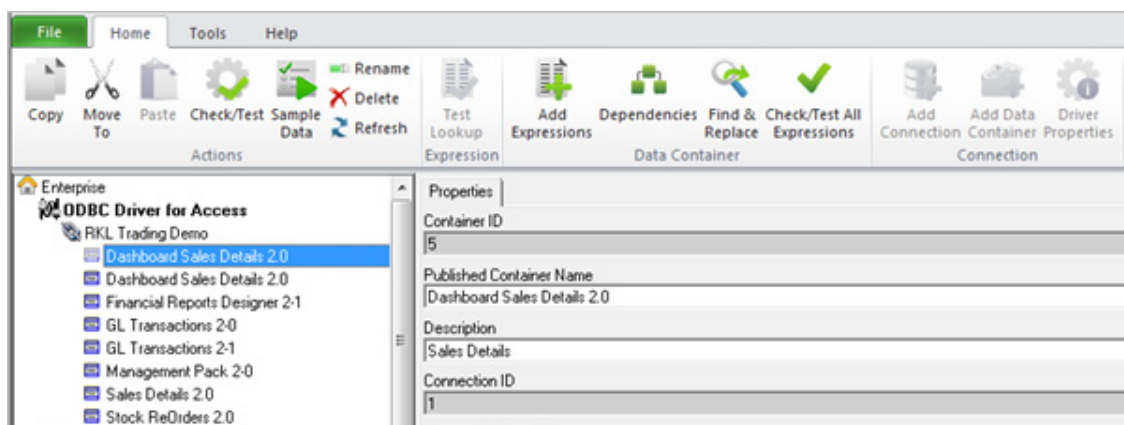
Connection function grouping enables modification of drivers and connections and includes the following existing features:

- Add Connection
- Add Data Container
- Driver Properties

The Connector Help tab aims to provide the user with informative resources which will guide the utilization and promote the understanding of the software. It contains features from the existing help drop down menu:

- View Help
- Website
- Online Academy
- Knowledge Base
- About

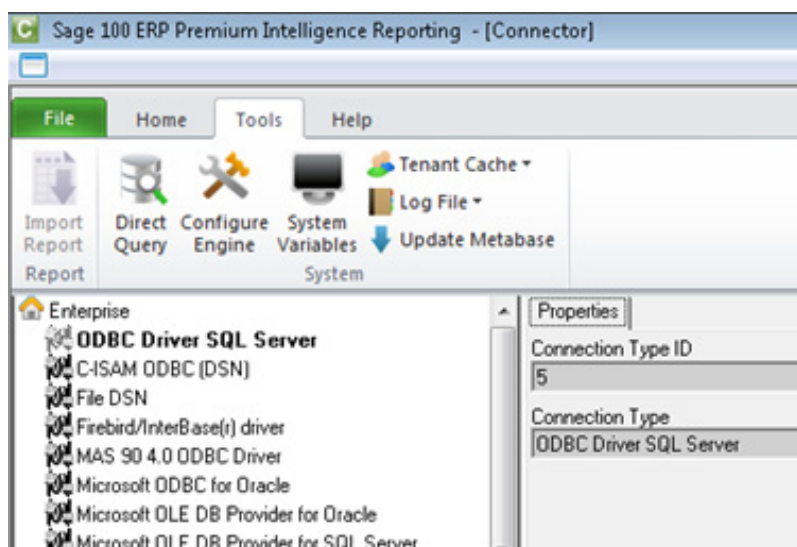
Location: Connector > Help



Easy Access to Less Commonly Used Connector Features

The Connector's less commonly used features are now accessible from the Tools tab in the new Connector Ribbon menu. All icons on the Tools tab ribbon menu are visible in windowed mode. The Tools tab contains further logical grouping of features, including Report functions and System functions which facilitate more advanced management within the Connector Module.

Location: Connector > Tools



Report feature grouping contains the existing Import Report feature.

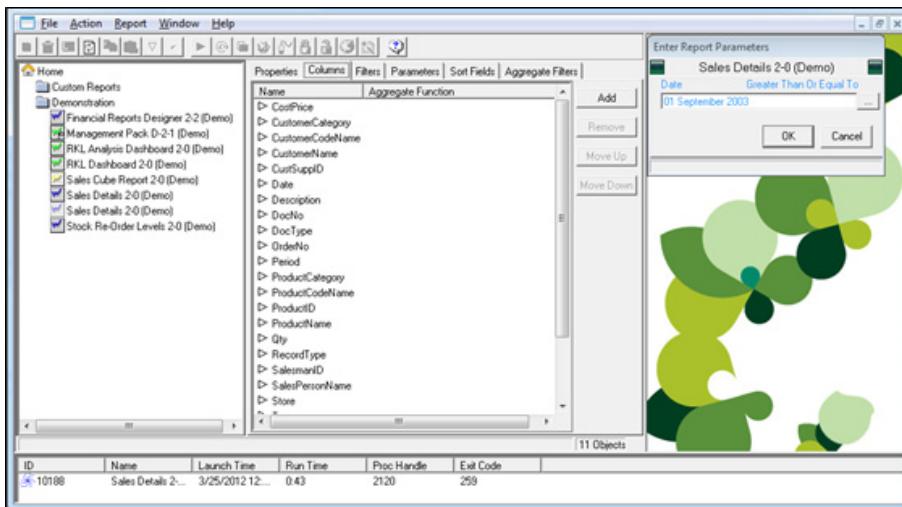
The System feature grouping includes the following existing Connector features:

- Direct Query, previously labeled Direct Query Tool
- Configure Engine, previously labeled Configure Output Engine
- System Variables
- Tenant Cache drop down with options of Open and Clear
- Log File drop down with options of Open and Delete
- Update Metabase

Report Manager Background Change

The background of the Report Manager has been updated to promote a more modern and comfortable environment and align the system with Sage branding.

Location: Report Manager > Run Report

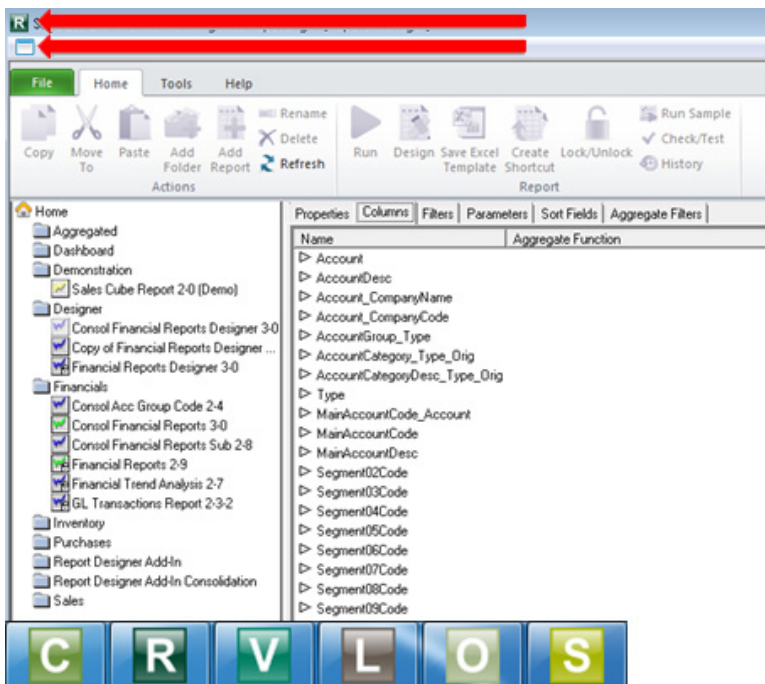


Replace Configurable Icons with Professional Standard Icons

Certain icons within the system were previously configurable to each implementation, support for configuration of these icons has been removed and the icons have been replaced with newer, more professional looking icons to ensure a consistent look and feel of this application for users regardless of which integrated system they are using it with. Additionally the Menu bar and Home node icons have been standardized across all modules.

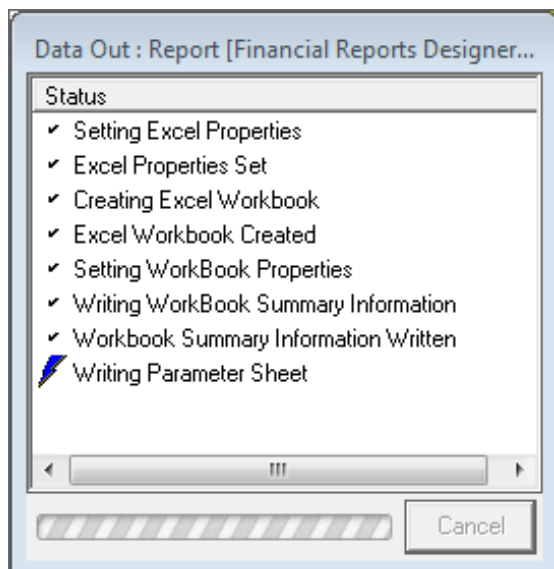
Location: Connector / Report Manager / Report Viewer /License Manager / OLAP Manager / Security Manager

Location: Windows Taskbar > Module Icons



Enhanced Report Execution Progress Indicator

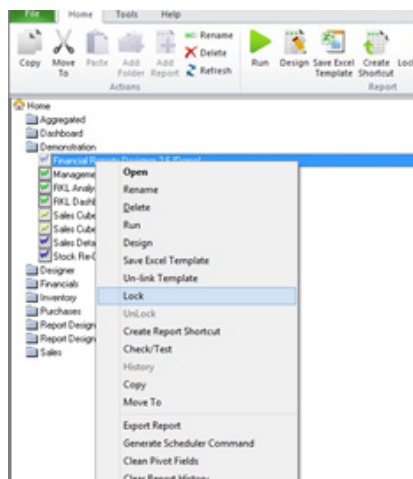
A new progress indicator has been implemented to replace the older styled moving icon, resulting in a more modern look and feel.



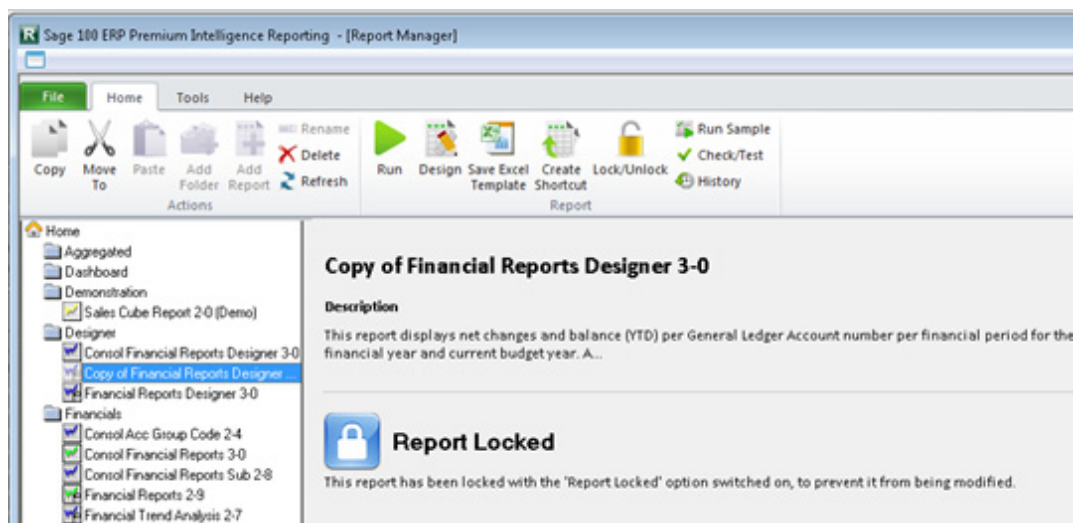
Improve Locked Report Properties Panel

The locked report screen and the 'Unlock on Copy' screen has been revamped to present information and instructions in a friendly and modern manner. This purpose of this revamp is to ensure users are not overburdened with information they do not necessarily wish to see and regular users are presented with a more professional screen to encourage a more comfortable experience.

Location: Report Manager > Right-click Report > Lock Report



Location: Report Manager > Report > Properties Tab > Show Advanced Options > Check 'Unlock on Copy' > Right Click Report > Lock Report

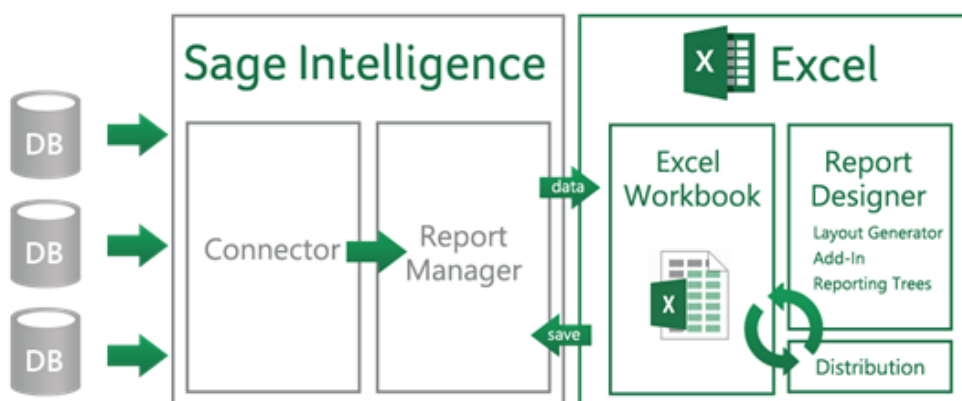


Report Designer Add-In

The new Report Designer Add-in provides an enhancement to the Report Designer module which presents an alternative to the current report layout generator to empower users to take control of all design aspects of their reporting layouts.

The model behind the feature introduced by this add-in is to break down a report into reusable pieces and then allow users to control where and how these pieces fit together to create a report. These pieces are Excel functions which communicate with a new In-Memory processing engine which will guarantee performance by being able to crunch financial numbers very quickly.

The diagram below depicts the positioning of the Report Designer Add-in.



Please review the Sage 100 ERP Intelligence Report Designer Add-In User Guide for guidance on how to use this add-in

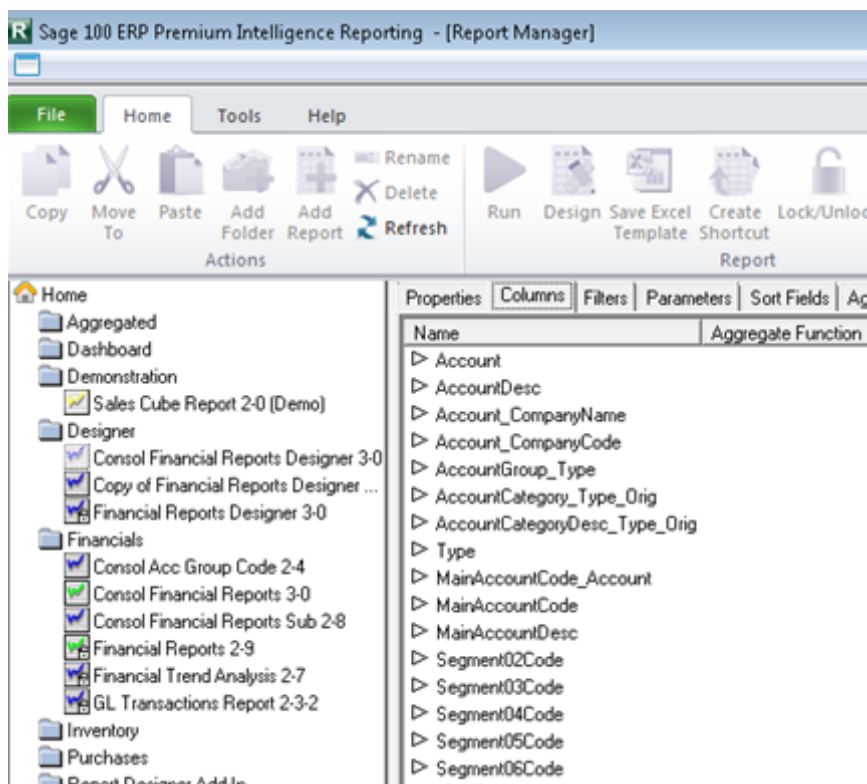
Improvements

Report Manager

Improved Behaviour of Report Property Columns

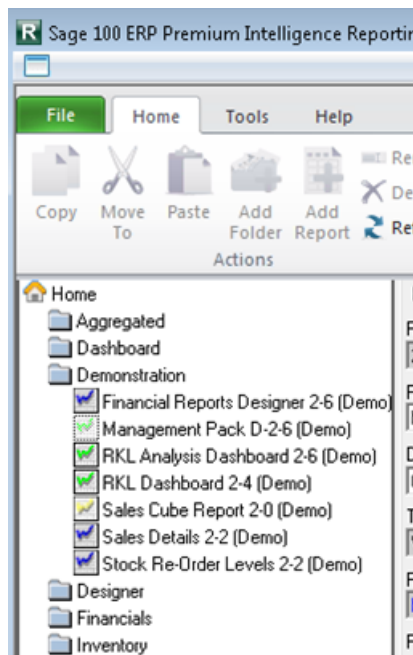
The tabs which appear when a report is selected within the report manager contain table grids to display data for columns, filters, parameters, sort fields and aggregate filters. The columns within these grids have been enhanced to automatically resize themselves to ensure they are displaying all text values fully. Previously if a text value was longer than the default column size it would be cut off, forcing a manual resize each time a tab was selected to view the text.

Location: Report Manager > Report > Columns / Filters / Parameters / Sort Fields / Aggregate Filters



Improved Reports Tree Header

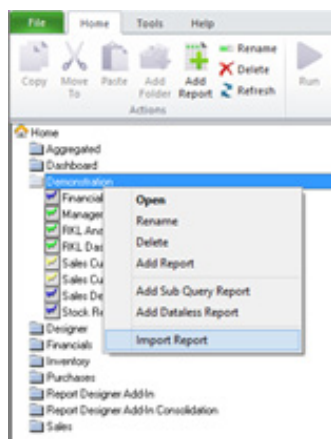
Within the Report Manager, the reports listing tree previously displayed a header which was incorrectly sized and allowed users to unnecessarily change the width of the viewable tree area. This header has been removed to promote a cleaner user interface and less confusion on how to change the width of the viewable tree area.



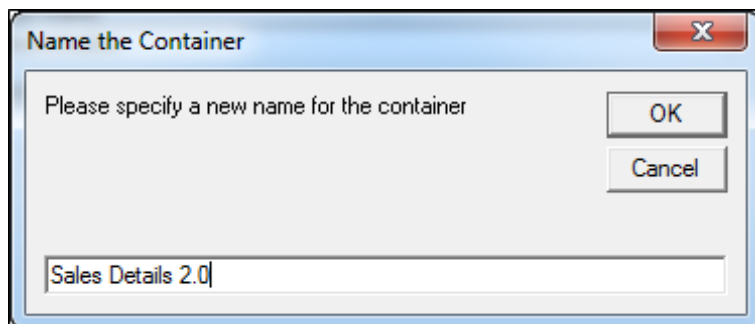
Ability to Rename a Duplicate Container When Importing

When importing a report which contains a container with the same name as an existing container, the system will now allow the incoming container to be renamed. Previously the system would create a duplicate named container, making it challenging to identify the new container.

Location: Report Manager > Right-Click on Folder > Import Report



Location: Connector > Right Click on Connection > Import Report

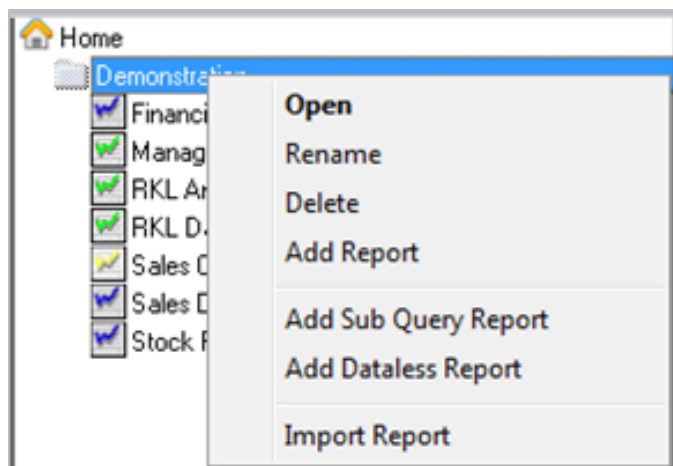


Report Manager Folder Context Right-Click Menu Simplified

The Right-click menus in the Report Manager have been simplified to provide the user with a more concise list of options as well as option labels that are more informative.

The Right-click options "Run Report Batch", "Run Report Batch (Mode 2)", "Properties" and "Refresh" on the Folder Context right-click Menu have been removed to help simplify the list of relevant options available. The "Refresh" feature is still accessible in the Report Manager Ribbon via the Home tab and "Run Report Batch" and "Run Report Batch (Mode 2)" are available under the retitled 'Run All Reports' option under the Tools ribbon tab.

Location: Report Manager > Home > Right-Click Demonstration Folder

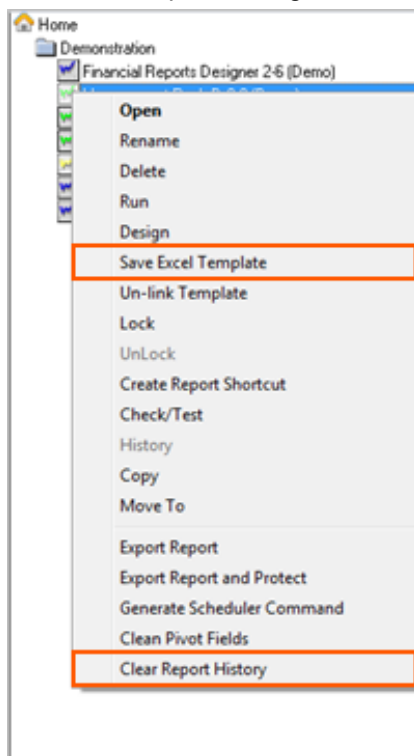


Report Manager Report Context Right-Click Menu Simplified

The Right-click options "Run Sample" and "Refresh" on the Report Context right-click Menu have been removed and are now accessible in the Report Manager Ribbon via the Home tab.

The Labels 'Create and Link Template' and 'Purge Instance History' have been replaced by less technical and therefore more easily understandable labels of 'Save Excel Template' and 'Clear Report History' respectively.

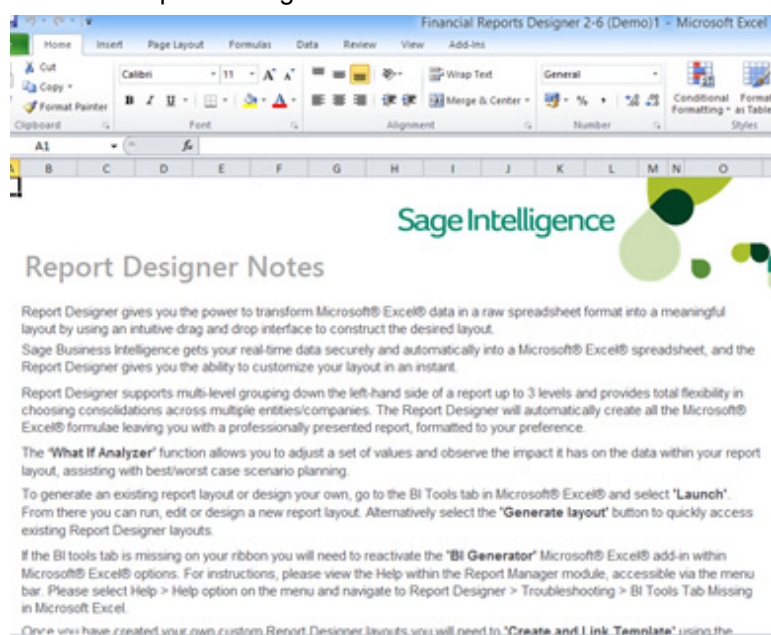
Location: Report manager > Home > Right-Click Demonstration Folder



Demonstration Reports

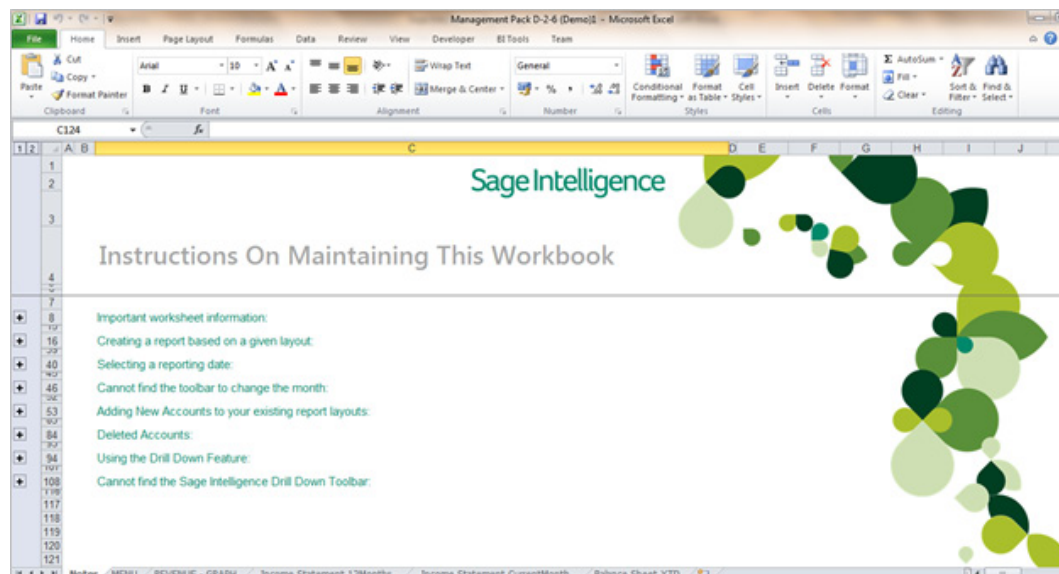
The Sage 100 ERP Intelligence Reporting Demonstration Reports have an updated look and feel.

Location: Report manager > Home > Demonstration > Financial Report Designer 2-6 > Run



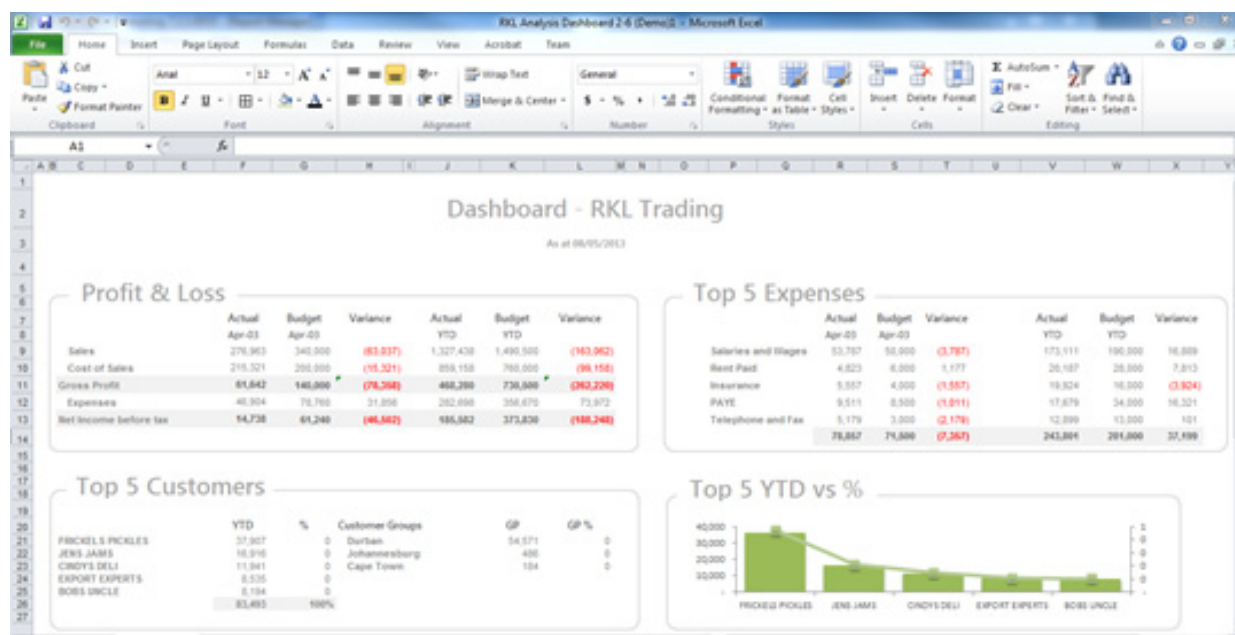
Financial Report Designer 2-6

Location: Report manager > Home > Demonstration > Management Pack D-2-6 > Run



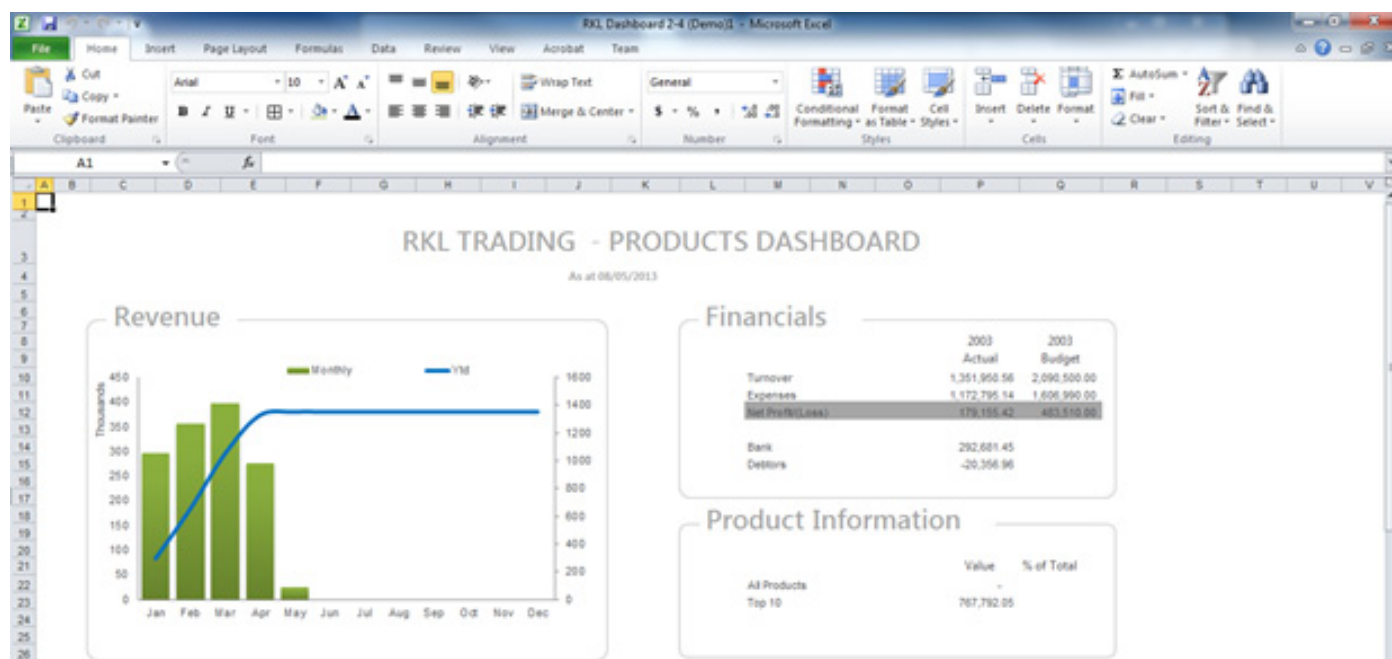
Management Pack D-2-6

Location: Report manager > Home > Demonstration > RKL Analysis Dashboard 2-6 > Run



RKL Analysis Dashboard 2-6

Location: Report manager > Home > Demonstration > RKL Dashboard 2-4 > Run



RKL Dashboard 2-4

Location: Report manager > Home > Demonstration > Sales Details 2-2 > Run

Sales Report
For the period to date from 01 Sep 2003

SalesPersonName (Alt)
Store (Alt)
Period (Alt)
CustomerCategory (Alt)

CustomerCodeName	ProductCategory	ProductCodeName	Qty	Total Cost	Total Sale	GP	GPM
CRISTOFORO JONES			76	14,192.81	18,809.81	4,608.99	24.51%
	W ALCOHOL		23	361.45	486.03	124.57	25.63%
		OPTV01-Captain Vial Sigma Cane	3	227.97	316.22	88.25	27.91%
		YARD02-Yardville Lager	20	133.49	169.81	36.32	21.39%
	W BEVERAGES		31	4,283.04	5,796.39	1,513.35	26.11%
		DRV503-Crystal Puddle Raspberry	31	4,283.04	5,796.39	1,513.35	26.11%
	W FRESH PRODUCE		6	6,331.31	8,245.16	1,913.85	23.21%
		ARCH01-Archies Red Apples	6	6,331.31	8,245.16	1,913.85	23.21%
	W MEATS		6	21.52	50.32	28.80	57.23%
		RONAS2-Ronalds Dried Ham	6	21.52	50.32	28.80	57.23%
	W OTHER		10	3,194.89	4,222.71	1,028.02	24.35%
		BX0005-B & X Sesames	4	479.93	645.16	174.23	27.01%
		BX0009-B & X Vihotenuts	3	2,358.70	3,077.42	718.72	23.35%
		RONAS1-Ronalds Dried Basil	3	365.06	560.13	195.07	27.01%
CRISTOFORO JONES			24	2,544.87	3,483.87	939.00	26.95%

SALES REPORT TOP 5 - GPM TOP 5 - VALUE PRODUCT CATEGORY'S - VALUE

Sales Details 2-2

Location: Report manager > Home > Demonstration > Stock Re-order Levels 2-2 > Run

CategoryName	ProductCodeName	ZeroFor	Open SOH	Purchases	Adjustments	Sales SOH	MaxLevel	ReorderLevel	ReOrderQty
0001 - Captain Vital Signa Ca		0	0	0	0	0	0	0	0
0001 - Captain Vital Signa Ru		0	0	0	0	0	0	0	0
0001 - Captain Vital Signa Sa		0	0	0	0	0	0	0	0
0001 - Jaque Fernta Ale		0	0	0	0	0	0	0	0
0001 - Jaque Fernta Lager		0	0	0	0	0	0	0	0
0001 - Jaque Fernta Port		0	0	0	0	0	0	0	0
0001 - Jaque Fernta Sherry		0	0	0	0	0	0	0	0
0001 - New Cactus Drope		0	0	0	0	0	0	0	0
0001 - Redberg Brandy		0	0	0	0	0	0	0	0
0001 - Redberg Cane		0	0	0	0	0	0	0	0
0001 - Redberg Cider		0	0	0	0	0	0	0	0
0001 - Redberg Rum		0	0	0	0	0	0	0	0
0001 - Redberg Sambuca		0	0	0	0	0	0	0	0
0001 - Redberg Tequila		1	4	0	0	0	4	5	0
0001 - Redberg Vodka		1	12	83	-2	78	15	20	10
0001 - Redberg Whisky		1	4	24	0	24	4	25	10
0001 - Redberg Whisky - Brand		0	0	0	0	0	0	0	0
0001 - Rocky Liquors - Brand		1	-2	20	19	21	16	25	0
0001 - Rocky Liquors - Vodka		0	0	0	0	0	0	0	0

Stock Re-order Levels 2-2

Sage 100 ERP Intelligence Reporting Templates

Customer Sales Report

A new Customer Sales template has been included which operates in the same way as the standard template however does not make use of the UQE.

Location: Report manager > Home > Sales > Customer Sales 2-7 > Run

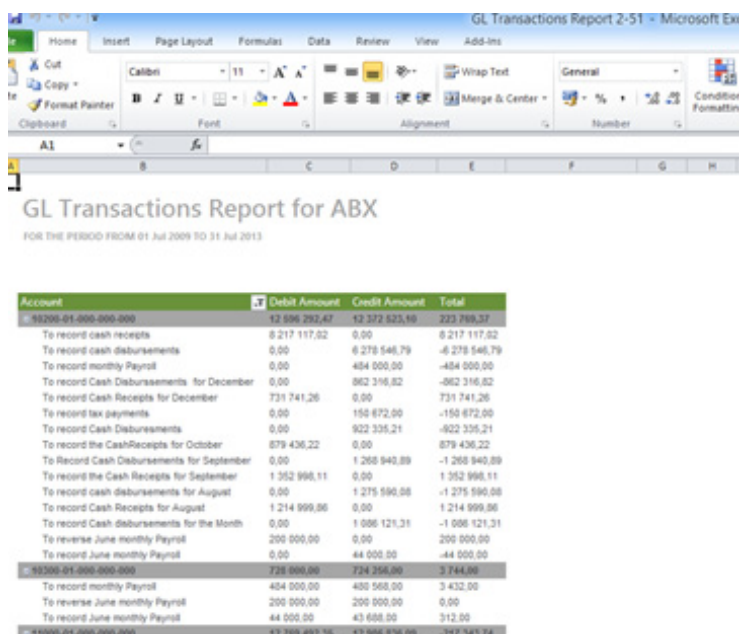
Customer Name	Item Code Desc	Quantity Shipped	Cost of Sales	Sales	Gross Profit	GP %
American Business Futures		0.00	329 090.43	329 090.43	100.00	
Open Invoice Balance		0.00	329 090.43	329 090.43	100.00	
Elbert Ergonomics		0.00	110 820.15	110 820.15	100.00	
Open Invoice Balance		0.00	110 820.15	110 820.15	100.00	
Amnet Processing Corp		0.00	133 772.57	133 772.57	100.00	
Open Invoice Balance		0.00	133 772.57	133 772.57	100.00	
Breslin Supply		0.00	161 017.20	161 017.20	100.00	
Open Invoice Balance		0.00	161 017.20	161 017.20	100.00	
Blamper Studio		0.00	109 603.60	109 603.60	100.00	
Open Invoice Balance		0.00	109 603.60	109 603.60	100.00	
Atlanta Designer Furniture		0.00	130 356.81	130 356.81	100.00	
Open Invoice Balance		0.00	130 356.81	130 356.81	100.00	
A To Z Carpet Supply		0.00	16 534.70	16 534.70	100.00	
Open Invoice Balance		0.00	16 534.70	16 534.70	100.00	
Balt's Telemarketing		0.00	95 473.21	95 473.21	100.00	
Open Invoice Balance		0.00	95 473.21	95 473.21	100.00	
Autocraft Accessories		0.00	16 358.85	16 358.85	100.00	
Open Invoice Balance		0.00	16 358.85	16 358.85	100.00	
Bay Pyrotechnics Corp.		0.00	6 547.30	6 547.30	100.00	
Open Invoice Balance		0.00	6 547.30	6 547.30	100.00	

Customer Sales 2-7

GL Transactions Report

A new GL Transactions report has been included which allows users to input Begin Date and End Date parameters.

Location: Report manager > Home > Financials > GL Transactions Report 2-5 > Run



Account	Debit Amount	Credit Amount	Total
10200-01-000-000-000	12 096 292.47	12 372 523.16	222 789.37
To record cash receipts	6 217 117.82	0.00	6 217 117.82
To record cash disbursements	0.00	6 279 546.79	-6 279 546.79
To record monthly Payroll	0.00	484 000.00	-484 000.00
To record Cash Disbursements for December	0.00	862 316.82	-862 316.82
To record Cash Receipts for December	731 741.26	0.00	731 741.26
To record tax payments	0.00	150 672.00	-150 672.00
To record Cash Disbursements	0.00	922 335.21	-922 335.21
To record the CashReceipts for October	879 436.22	0.00	879 436.22
To Record Cash Disbursements for September	0.00	1 268 940.89	-1 268 940.89
To record the Cash Receipts for September	1 352 996.11	0.00	1 352 996.11
To record cash disbursements for August	0.00	1 275 590.08	-1 275 590.08
To record Cash Receipts for August	1 214 999.06	0.00	1 214 999.06
To record Cash Disbursements for the Month	0.00	1 006 121.31	-1 006 121.31
To reverse June monthly Payroll	200 000.00	0.00	200 000.00
To record June monthly Payroll	0.00	44 000.00	-44 000.00
10200-01-000-000-000	728 980.00	724 396.00	3 444.00
To record monthly Payroll	484 000.00	480 568.00	3 432.00
To reverse June monthly Payroll	200 000.00	200 000.00	0.00
To record June monthly Payroll	44 000.00	43 828.00	312.00
10200-01-000-000-000	12 798 492.35	12 966 536.00	-217 343.74

GL Transactions Report 2-5

Report Designer Enhancements

The Report Designer user interface has been significantly improved within this release.

Ability to Maximize Report Designer Screen

The Report Designer window can now be maximized using the standard Windows maximize features. This allows users to take advantage of the full extent of their monitor's size when designing financial reports. This change supports users in designing their reports faster and easier by showing more of report layout's row and columns as well as making the various row and column options easier to select without repetitive scrolling.

Enhanced Report Designer Mapping Tool

Due to popular demand the Report Designer's mapping tool has been enhanced within this release of Sage 100 ERP Intelligence Reporting with the most notable enhancement being the ability for end-users to natively add and delete Row Reporting Groups from within the Mapping Tool's interface.

Location: Run Report Designer Report with unmapped categories/accounts

Location: Select 'Mapping Tool' from BI Tools ribbon tab after running out a Report Designer Report

Map Financial Categories to Row Reporting Groups

Group from: Group into:

This form allows you to manage the mapping between financial categories and Row Reporting Groups for the following reasons:

1. The default report designer layouts within this report require these mappings to be setup as they are not specific to your General Ledger.
2. You can add your own customized Row Reporting Groups to change your available row options when designing your reports.

The mappings and groupings performed here are saved within a grouping field in Sheet1 of your Excel Workbook called 'PrimaryGrouping'. Please select the Help Icon to learn more about this form.

Unmapped Categories

- Revenue
- Other Income and Expense
- Cost of Goods Sold

Add

Remove

Mapped Categories

- REVENUE
- COST OF GOODS SOLD
- COST AND EXPENSES
- OTHER INCOME AND EXPENSES**
- INCOME TAX
- INTEREST INCOME AND EXPENSE
- CURRENT ASSETS
- NON CURRENT ASSETS
- CURRENT LIABILITIES
- NON CURRENT LIABILITIES
- EQUITY

Add...

Delete

OK **Cancel**

Row and Column Fields Now Alphabetically Ordered

Previously the available row and column options within the Report Designer were not ordered, sometimes making it difficult to find the right field quickly. This has changed and the available fields are now ordered alphabetically, allowing users to find what they need faster.

[illegible]

Smoother Row and Column Dragging

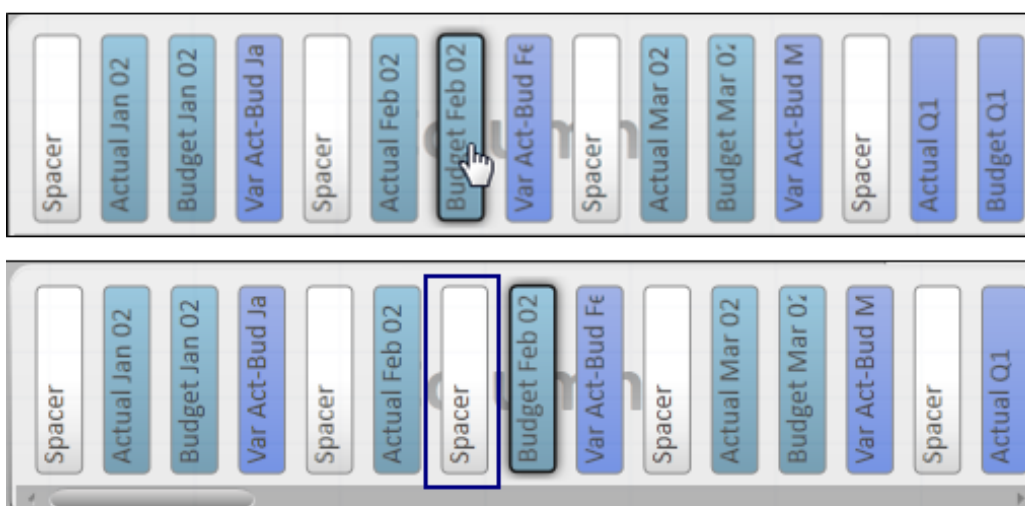
The areas of the Report Designer which show the selected Rows and Columns have been improved to be smoother and much easier to use. Dragging rows or columns is now a far more pleasant experience allowing users to spend less time arranging their rows and columns. Additionally the scroll bar no longer allows users to scroll beyond their selected rows or columns making the process of moving columns or rows simpler.

Larger Fonts and Larger Row and Column Placeholders

The fonts used within the Report Designer have been enlarged to support increased readability and the placeholder bars within the selected row and column layout areas are now wider to accommodate longer field names and making existing layouts easier to read.

Ability to Insert Fields at Selection Point

The process of adding fields to existing report layouts has been made even easier with the ability to immediately insert row or column fields at a specific location within your layout. No longer do users need to insert a field to the end of the column or row layout area and then drag the field to their desired location - by simply selecting a field within the row or column layout areas, users can then select a field to be inserted next to their selection point, this includes spacers.



Quicker Loading Time

The Report Designer has been optimized to load up faster than ever before, ensuring there is no inefficient use of processor intensive graphics.

Report Designer Layout Text Columns Auto-size

Previously any text columns placed into a Report Designer layout would not automatically size according to the content within them, usually needing users to manually resize the second column like account description. The need for this manual action has now been eliminated and the Report Designer now correctly sizes each text column according to the longest value that the field contains, saving you the time needed to resize manually.

Location: Generate a Report Designer layout with text columns.

	G	H	I	J	K	L
1	Global Enterprises					
2						
3	INCOME STATEMENT					
4	for Period Ending Period 12, 2010					
5						
19						
20						
24						
25	REVENUE					
26	REVENUES					
27	400-01-00	Distribution sales (history)				
28	400-01-01	Distribution sales - East				
29	400-01-02	Distribution sales - West				
30	400-02-00	Service fees				
31	400-02-01	Service fees - East				
32	400-02-02	Service fees - West				
33	400-03-00	Freight charges				
34	400-03-01	Freight charges - East				
35	400-03-02	Freight charges - West				

Minor Mapping Tool User Interface Update

The Mapping Tool has been improved with a more descriptive explanation of the purpose of the Mapping Tool; re-search showed that new users often did not necessarily understand the reason for this tool popping up the first time a Report Designer report is run. Each of the column lists has been widened to accommodate longer values and the help icon has been enlarged and now links directly to an improved help file topic on the Mapping Tool instead of only popping up a basic textbox.

In addition, a selected item within the 'Unmapped Categories' list would previously lose its highlight once focus was given to another list on the form – this has now been resolved and the item retains its highlight, making this form easier and faster to use.

Map Financial Categories to Row Reporting Groups

Group from: Group into:

This form allows you to manage the mapping between financial categories and Row Reporting Groups for the following reasons:

1. The default report designer layouts within this report require these mappings to be setup as they are not specific to your General Ledger.
2. You can add your own customized Row Reporting Groups to change your available row options when designing your reports.

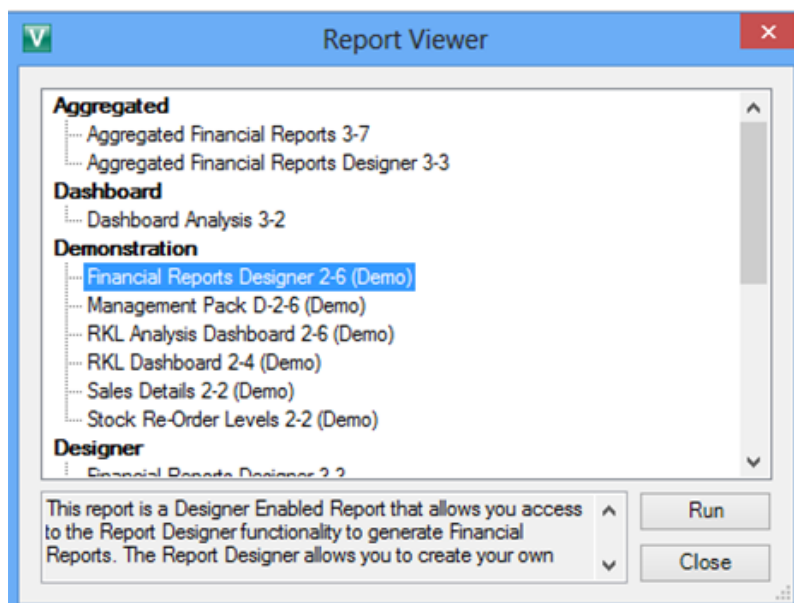
The mappings and groupings performed here are saved within a grouping field in Sheet1 of your Excel Workbook called 'PrimaryGrouping'. Please select the Help icon to learn more about this form.

Report Viewer Usability

Sage 100 ERP Intelligence Reporting includes the following usability enhancements to the Report Viewer module.

- The Report Viewer remains open after selecting to run a report thereby allowing users to run multiple reports without having to reopen the Report Viewer
- Report Viewer window size persistence has been introduced
- A minimum window size has been enforced to ensure that all available reports are visible

Location: Report Viewer > Demonstration

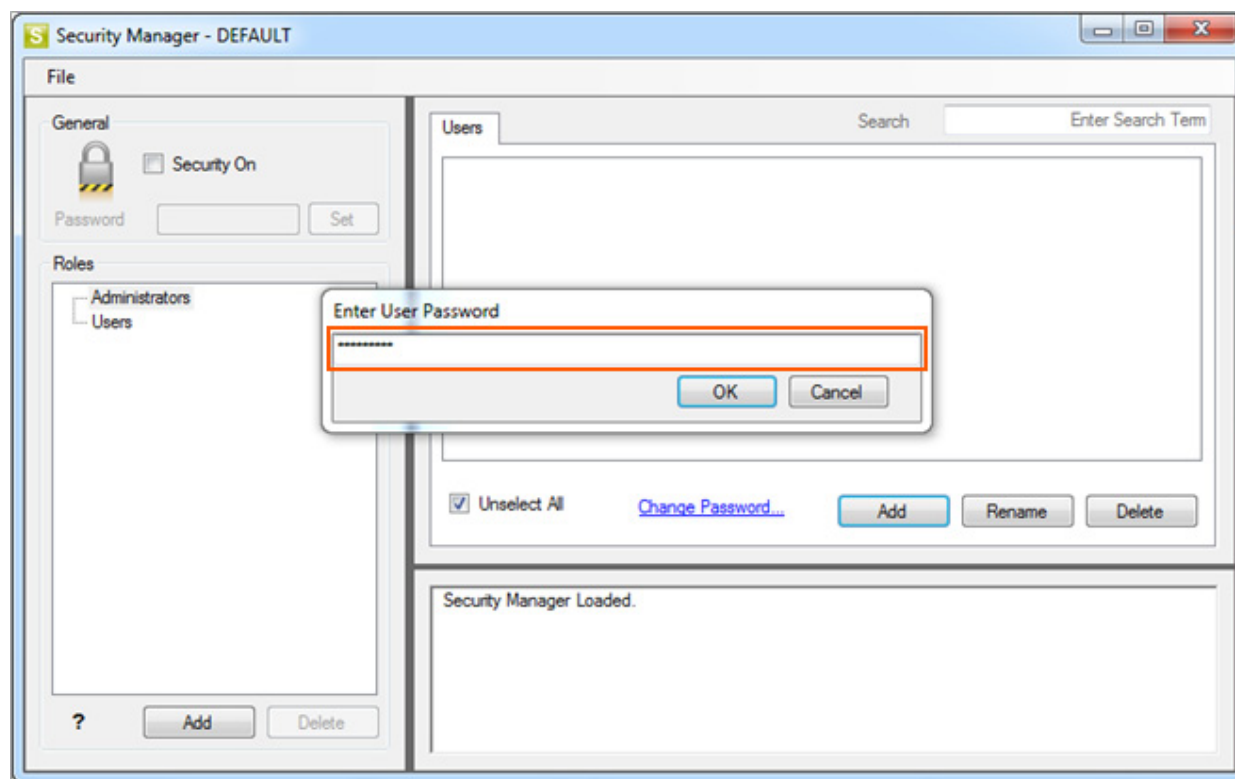


Security Manager

Sage 100 ERP Intelligence Reporting includes an enhancement to the Security Manager module to display the user input for setting new and updating existing passwords in asterisk and not in plain text.

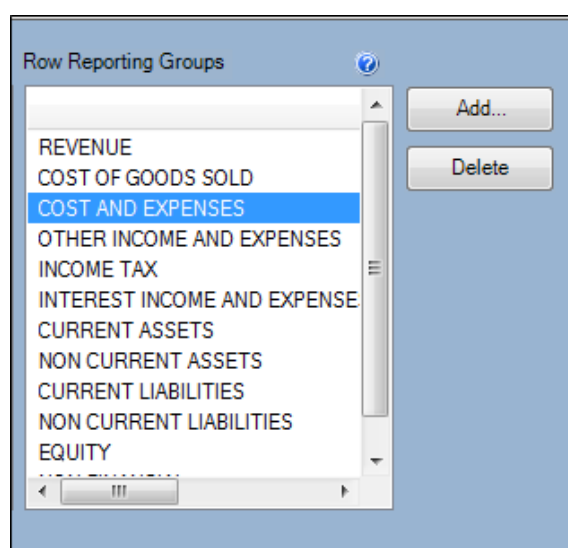
Location: Security Manager > Add User

Location: Security Manager > Change Password



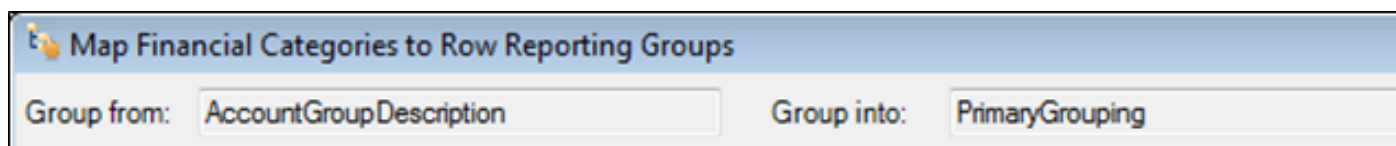
Mapping Tool

Based on requests to give users more control of the Row Reporting Groups that the Report Designer uses to group GL accounts on a layout, end-users can now take full control of their reporting layouts by adding their own new reporting groups and deleting existing reporting groups.



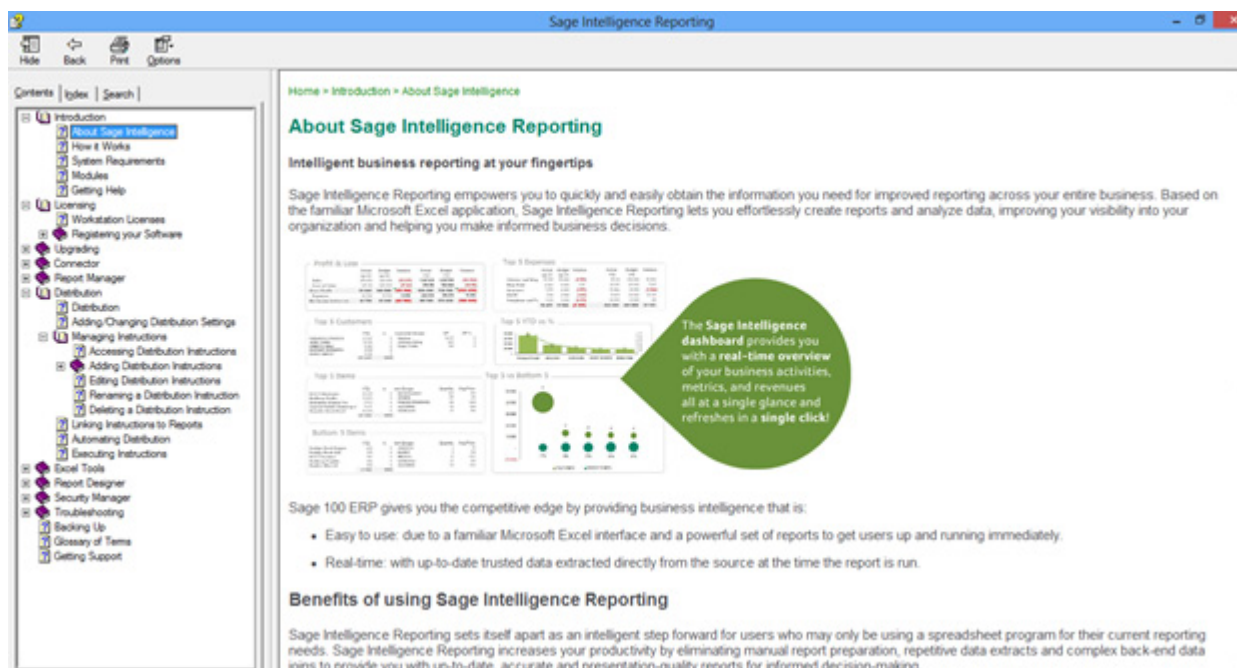
Mapping Tool 'Group from' and 'Group into' Fields Now Visible

The Mapping Tool now shows very clearly that it has been configured to use predetermined fields from within your Report Designer report to perform mappings. The objective of showing the Group from and Group into fields is to ensure users understand that the 'Available Categories' field list can be sourced from different fields within your report, like Account Number for example (allowing you to map account numbers to Row Reporting Groups instead of mapping standard grouping categories to Row Reporting Groups)



Mapping Tool section within Help File Improved

The Mapping Tool section has been reviewed and improved to ensure that the users can get access to the correct level of detail if required. Additionally, instructions on how to configure the mapping tool to use different 'Group from' fields have been added to the same help file topic.

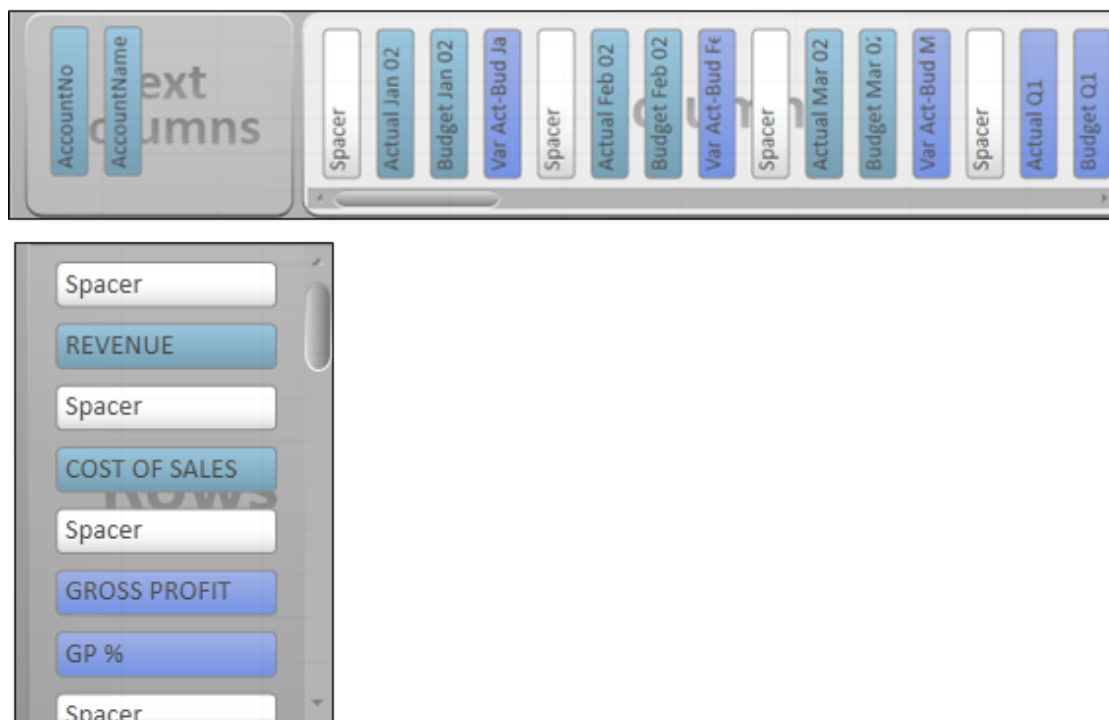


Performing Mappings Now No Longer Mandatory Upfront

Previously users were forced to map their Available Categories to Row Reporting Groups before being allowed to run out Report Designer Reports. This rule has now been relaxed in favour of explaining the purpose of the Mapping Tool clearly and then giving users more control over when they would like to approach the design of their reports. The Mapping Tool can then be accessed via the BI Tools Ribbon tab once the report has run out into MS Excel.

Improved Performance

The Mapping Tool now maps categories to Row Reporting Groups faster than ever, as we opened up the ability for users to add their own Row Reporting Groups we also made sure the Mapping Tool's internal logic was reviewed to handle larger amounts of Row Reporting Groups even quicker.



Multi-Language Support

Excel Components Now Support Multi-Language Implementation

All component located under the 'BI Tools' tab within Excel (Report Designer, Tools, Distribution) have been upgraded to support the implementation of different languages. Previously these components only supported being deployed in English. This change will significantly decrease the time needed to implement this application in different languages. *NOTE* These Excel components do not yet support implementations of all Unicode languages. Currently only French is fully supported, as more languages are implemented and tested – they will be fully supported.

Support for Excel 2010 64 Bit Edition

Sage 100 ERP Intelligence Reporting is now compatible with the 64 bit edition of Microsoft Excel 2010. Processors that are 64-bit are becoming the standard for systems that range from servers to desktop computers. These 64-bit systems can use more virtual and physical memory than 32-bit systems. This allows users work with much larger data sets than they could previously, and to analyze and solve large computational problems. Microsoft Office 2010 introduces a native 64-bit version of Microsoft Excel to take advantage of this larger capacity and now you can use Sage 100 ERP Intelligence Reporting with this version too.

NOTE: The option to 'Use my Outlook Profile' within the 'Distribution Settings' form is not supported when using the 64 bit edition of Microsoft Outlook 2010. The 'SMTP / Exchange Server' option must be used instead.

Upgrade to Microsoft .NET Framework 4.0

The entire Sage 100 ERP Intelligence Reporting product stack has been moved onto .NET Framework 4.0.

Optimized Installation

For users who already have the .NET Framework 4.0 installed, the installation process for Sage 100 ERP Intelligence Reporting is now much faster than before.

Easy Integration with .NET 4.0 Accounting and ERP Systems

Sage 100 ERP Intelligence Reporting can now be integrated with Accounting/ERP systems which have moved onto .NET Framework 4.0 without the need for any additional customized integration development.

Smoother Integration with Microsoft Excel

Being on the latest .NET Framework allows Sage 100 ERP Intelligence Reporting to leverage the most stable integration technologies available for Microsoft Excel, resulting in a better experience inside Excel when using the 'BI Tools' features.

Resolved Issues

License Manager Issues

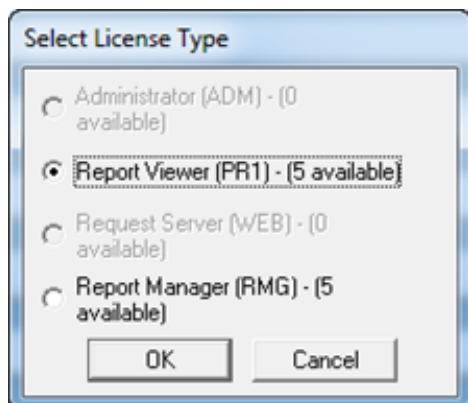
Wording

The License Manager can be localized to operate with the wording 'Registration' instead of 'Serialization'. In some instances the word 'Serialization' was discovered to still exist within systems configured to 'Registration' localization.

Error When Adding a New Workstation

Previously while adding a new workstation, if the OK button was selected before specifying an option within the "Select License Type" window, a Runtime Error '94'Invalid Use of Null displayed. This has been resolved by making a selection mandatory before selecting OK on this form.

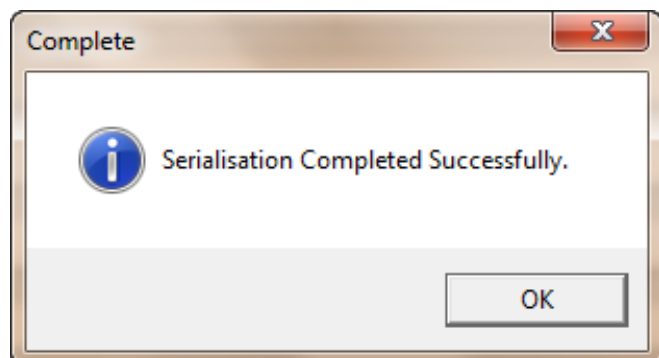
Location: Launch Non-Integrated License Manager > Right Click on first object within object list > Select Add Workstation License.



License Manager Confirmation Pop-up Window

The serialization confirmation pop up is displayed each time after the users serializes their software and not only after the first successful serialization.

Location: License Manager > Serialise

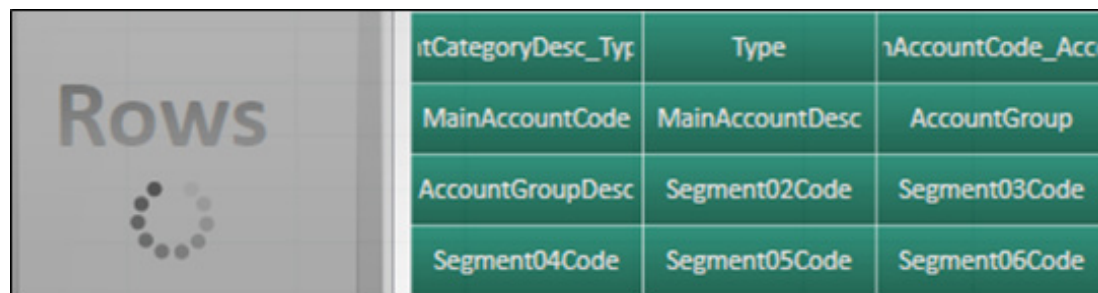


Report Designer Row Loading Indicator

In the event of many Row Reporting Groups being selected for use within a Report Designer layout, the 'edit layout' manager may take a bit longer to load rows giving the impression of a unresponsive form. To avoid this perception, a circular progress indicator has been added to the 'Rows' section of the Report Designer layout manager and will appear immediately if the software detects that loading rows will take longer than usual.

Location: Load an existing Report Designer layout via the 'Launch' button within BI Tools tab

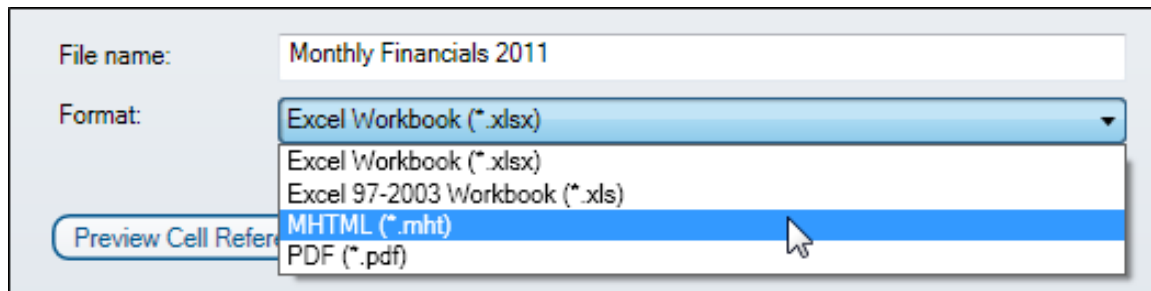
Location: Quick edit an existing Report Designer layout via BI Tools tab



Distribution Format Spelling

Within a Distribution Instruction is the ability to choose the format that each distribution function must send a report as, once of these options was incorrectly listed as MHMTL instead of HTML – this has been corrected.

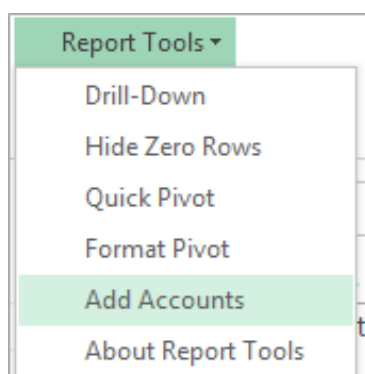
Location: BI Tools ribbon tab > Manage Instructions > Edit an Instruction



Add Accounts on a Secondary Monitor

Users are now able to view the Add Accounts pop-up windows on a secondary monitor.

Location: Excel > Add-Ins > Report Tools > Add Accounts



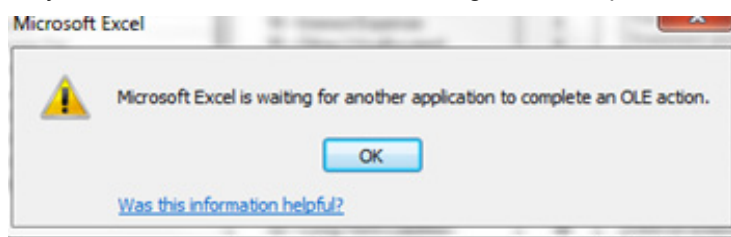
Known Issues

The Report Manager and Connector Ribbon on Windows Vista

Users installing the software on a Windows Vista operating system may experience misplaced ribbon tabs in both the Report Manager and Connector. This will result in the tabs being partially cut-off at the top of their screen, the impact is minor and therefore may be considered to be resolved in a future release.

Format pivot hangs when Excel is on a secondary monitor

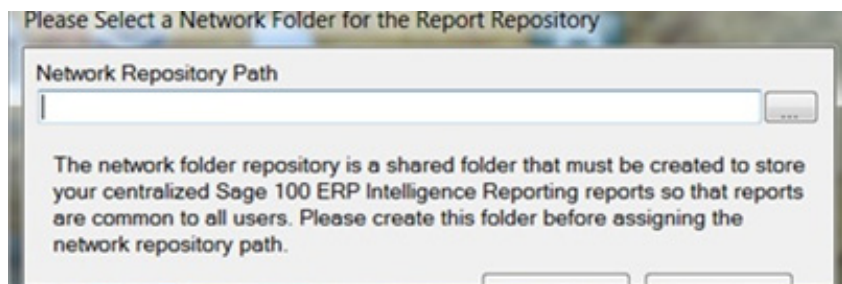
Users may experience an issue, if they click “format Pivot” whilst Excel is open on a secondary monitor. The issue they will be faced with is Excel will Hang, and then present the user with the below error



The work around users need to apply is to Format Pivots on their primary screen. Due to the simple work around, the issue has been noted to be corrected in a future release.

Intelligence does not recognize windows resolutions other than standard 100%

When trying to use a windows resolution greater than 100%. Users will notice that Intelligence is not resizing screen based Windows settings, as can be seen below:



To avoid this temporary inconvenience users are encouraged to use a resolution of 100%. This issue has been noted for correction in a future release.

Technical Error message when a user attempts to run an Intelligence Report on a machine that does not have Excel install

In the event that a User attempts to run out an Intelligence Report on a machine that does not have Excel installed, they will be presented with the following message:

Could not load file or assembly 'ADODB, Version=7.0.3300.0, Culture=neutral, PublicKeyToken=b03f5f7f11d50a3a' or one of its dependencies. The system cannot find the file specified.

Number: -2147024894

Source:

Driver Error: Unknown

SQL State: Unknown

We recognize that this error message will not be easily understood by users. We have therefore created a knowledge base article to translate the meaning to users. This issue has been noted for correction in a future release.

Sage
6561 Irvine Center Drive
Irvine, CA 92618-2301
866-996-7243
NA.Sage.com



©2013 Sage Software, Inc. All rights reserved. Sage, the Sage logos, and the Sage product and service names mentioned herein are registered trademarks or trademarks of Sage Software, Inc., or its affiliated entities.
All other trademarks are the property of their respective owners.