



Sage 300 ERP 2014 Intelligence Reporting Release Notes

Gina Dowling
2013

The software described in this document is protected by copyright, and may not be copied on any medium except as specifically authorized in the license or non-disclosure agreement.

This document is also protected by copyright, and may not be reproduced or transmitted, in whole or in part, by any means, including photocopying, facsimile transmission, or reduction to any electronic medium or machine-readable form, without the express written consent of Sage Software Inc.

© 2014 Sage Software, Inc. All rights reserved.

The Sage Software logo and the Sage Software product and service names mentioned herein are registered trademarks or trademarks of Sage Software, Inc. or its affiliated entities. Adobe and Adobe are registered trademarks of Adobe Systems, Incorporated. Microsoft, the Microsoft logo, MS, MSDOS, FRx, Microsoft Excel, Windows and Windows NT are trademarks of Microsoft Corporation. Other product names are trademarks or registered trademarks of their respective owners.

Table of Contents

Table of Contents	3
Release Notes	4
Introduction	4
New Features	5
New Report Designer	5
New Financial Reports	11
Report Manager and Connector Ribbon	13
Improvements	19
Usability Improvements	19
User Interface Modernization	23
Multi-language Support	25
Support for Excel 2010 64 Bit Edition	25
Upgrade to Microsoft .NET Framework 4.0	26
Demonstration Reports	26
Resolved Issues	30
Ability to disable Direct Query Tool	30
Security Manager	30
Add Accounts on a Secondary Monitor	30
License Manager Confirmation pop-up Window	30
Known Issues	31
Multiple Installations of Microsoft Excel	31
Balance Drill Down using Account Exclusion rules	31
Running Reports after Installation	31
Running Reports from Report Manager	31
Bulk Import for Consolidated Reports	31
System Requirements	32

Release Notes

Introduction

These release notes highlight the differences between and contain important information about usability enhancements and resolved issues in Sage 300 ERP 2012 Intelligence Reporting and Sage 300 ERP 2014 Intelligence Reporting. The Sage 300 ERP 2014 Intelligence Reporting release is focused on features which aim to improve the usability and performance of the solution.

New Features

New Report Designer

The new Sage Intelligence Report Designer boasts a fresh new user interface to supplement a powerful generation engine, utilizing the Report Designer In-Memory technology, allowing for improved performance and usability.

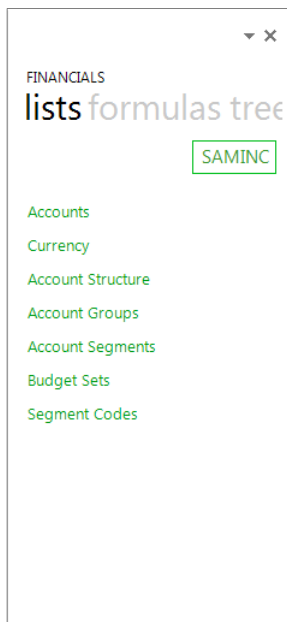
You have two methods of creating financial reports using the Report Designer:

- For novice Excel users, the Sage Intelligence Report Designer Layout Generator is easy to use and automates the design of reports layouts quickly and accurately.
- For intermediate Excel users the Sage Intelligence Report Designer Task Pane is a 100% Excel experience and offers maximum control and flexibility over report layouts.

Task Pane

The new Report Designer has incorporated the Task Pane as a report design option for intermediate Excel users. You are able to use the Task Pane to access Chart of Account information and return balances from their General Ledger. Support for alpha-numeric account number ranges has been introduced.

Location: Sage 300 ERP > Intelligence Reporting > Report Manager > Designer > Demonstration Report Designer > Run



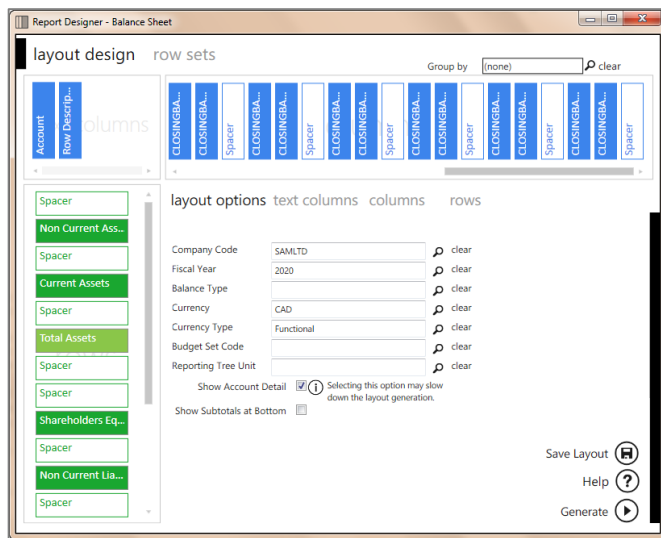
Layout Generator

The Layout Generator has undergone changes to the user interface to improve usability and to support the enhancements made to the generation engine, allowing the Layout Generator to run from the In-Memory engine, resulting in improved performance.

You will be able to create and edit your layouts in the Layout Design tab. In order to create a layout you will need to configure the following areas:

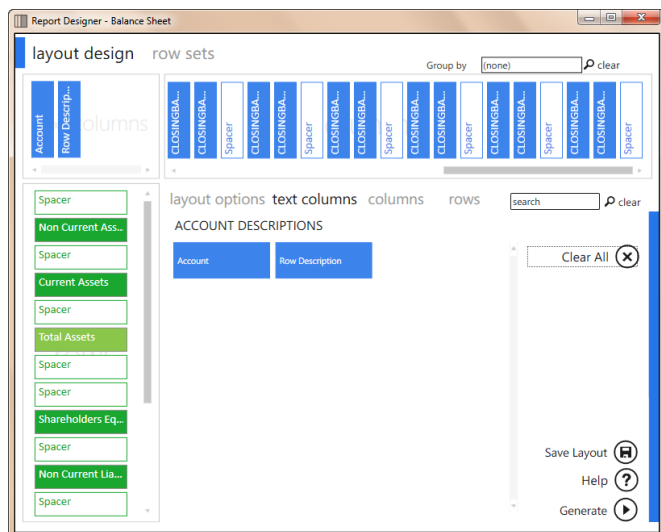
- Layout Options – Allows you to specify filters which will apply to the entire layout once generated into Excel. A Reporting Tree is now included as a layout option.

Location: Sage 300 ERP > Intelligence Reporting > Report Manager > Designer > Demonstration Report Designer > Run > BI Tools > Quick Edit > Balance Sheet > Layout Options



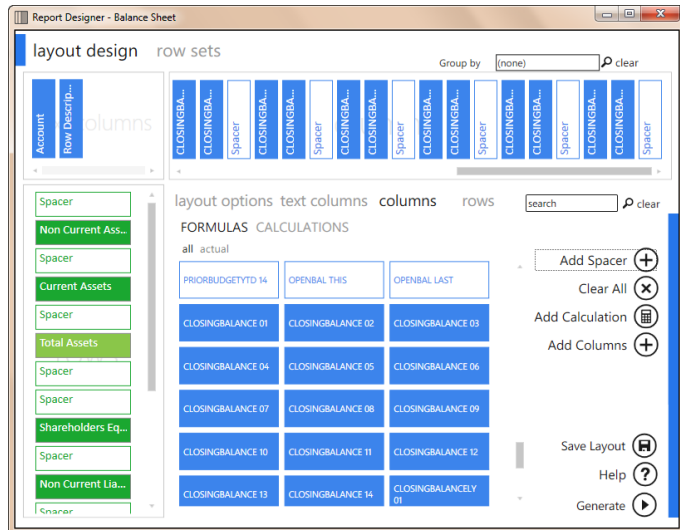
- Text Columns tab – Provides you with a predefined set of descriptive columns to add to the layout design.

Location: Sage 300 ERP > Intelligence Reporting > Report Manager > Designer > Demonstration Report Designer > Run > BI Tools > Quick Edit > Balance Sheet > Text columns



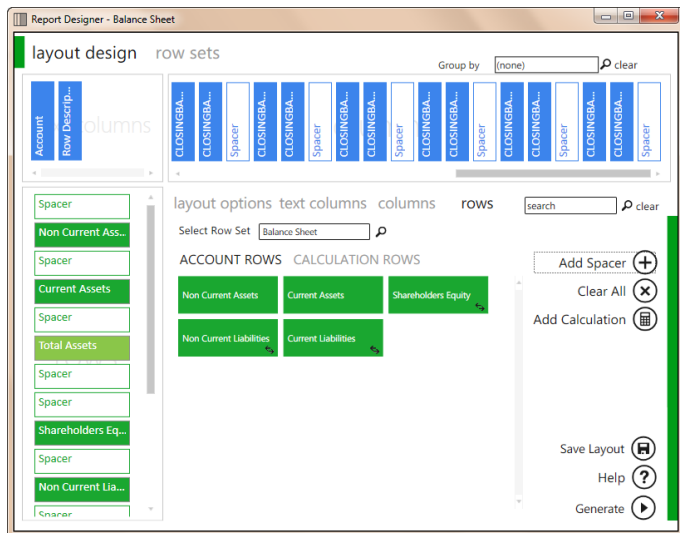
- Columns tab – Provides you with a set of predefined columns, based on formulas, to add to the layout design in order to return balances from the General Ledger.

Location: Sage 300 ERP > Intelligence Reporting > Report Manager > Designer > Demonstration Report Designer > Run > BI Tools > Quick Edit > Balance Sheet > Columns



- Rows tab – Provides you with the ability to select customized rows from the selected Row Set.

Location: Sage 300 ERP > Intelligence Reporting > Report Manager > Designer > Demonstration Report Designer > Run > BI Tools > Quick Edit > Balance Sheet > Rows



You can now create calculated items using the Calculator which has replaced the Formula Builder.

Location: Sage 300 ERP > Intelligence Reporting > Report Manager > Designer > Demonstration Report Designer > Run > BI Tools > Quick Edit > Balance Sheet > Rows > Add Calculation

The Calculator dialog box is titled "Calculator". It features a "Calculation Area" at the top with a dropdown menu currently showing "Non Current Assets". Below this, there are two tabs: "account rows" and "calculation rows". The "account rows" tab is active, displaying a grid of account categories: "Non Current Assets", "Current Assets", "Shareholders Equity", "Non Current Liabilities", and "Current Liabilities". To the right of the grid is a numeric keypad with buttons for "+", "-", "*", "/", "(", and ")", along with a "clear all" button with an 'X' icon. Below the keypad are three buttons: "enter value", "add value" with a "+" icon, and "set %" with a "%>" icon. At the bottom of the dialog are "save" and "cancel" buttons.

Commonly used layout design functions have been grouped together to improve usability by simplifying usage patterns. The common functions also include the ability to save the layout design.

Location: Sage 300 ERP > Intelligence Reporting > Report Manager > Designer > Demonstration Report Designer > Run > BI Tools > Quick Edit > Balance Sheet > Rows

The layout design interface is titled "layout design" and "row sets". It includes a "Group by" dropdown set to "(none)" with a "clear" button. Below this is a list of "columns" with labels like "CLOSING BALANCE", "Spacer", and "CLOSING BALANCE". On the left, there is a list of "rows" including "Spacer", "Shareholders Equity", "Non Current Liabilities", "Current Liabilities", "Total Liabilities", and "Total Shareholders Equity & Liabilities". In the center, there are sections for "layout options", "text columns", and "columns". Below these are "ACCOUNT ROWS" and "CALCULATION ROWS" with corresponding account names. On the right, a red-bordered box contains a vertical menu of actions: "Add Spacer" with a "+" icon, "Clear All" with an "X" icon, "Add Calculation" with a calculator icon, "Save Layout" with a floppy disk icon, "Help" with a "?" icon, and "Generate" with a play button icon. A search bar with a "clear" button is located above this menu.

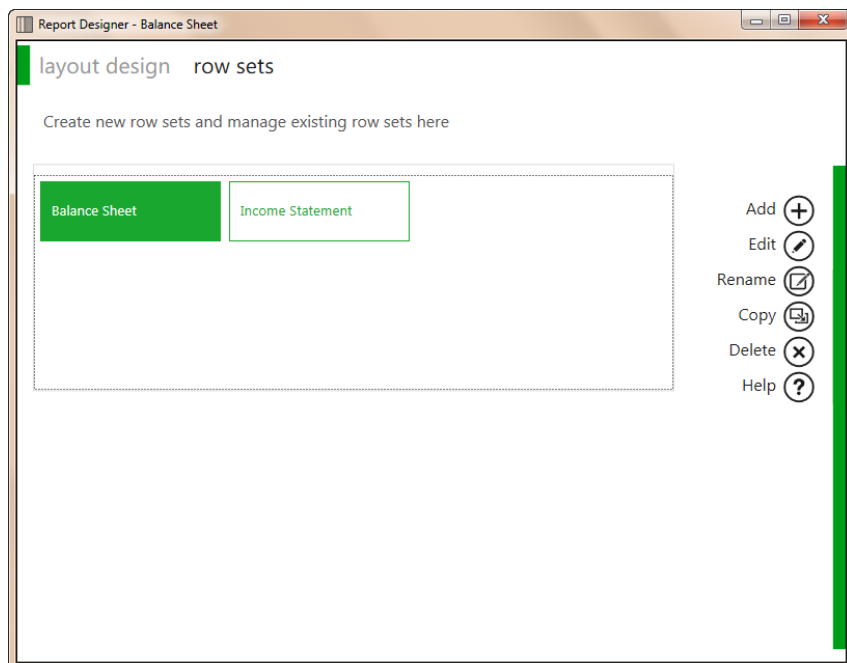
Row Sets

Row Sets allow you to define customized rows, based on rules using ranges and wildcarding. The Row Set is reusable across all layouts in the report and is centrally managed, reducing the time spent customizing and editing rows in reports. An account rule preview is available to ensure that the rules return the correct accounts. Once a row set has been defined, you are able to use the Row Set within your layout design.

You are able to perform the following actions when managing a Row Set:

- Add – Adds a new row set.
- Edit – Edits the selected row set.
- Rename – Allows users to rename the selected row set.
- Copy – Allows users to make a copy of the selected row set.
- Delete – Deletes the selected row set.

Location: Sage 300 ERP > Intelligence Reporting > Report Manager > Designer > Demonstration Report Designer > Run > BI Tools > Quick Edit > Balance Sheet > Row Sets



You are able to perform the following functions within the Row Set editor:

- Insert – Inserts a new row below the active row.
- Clear – Clears the currently selected row.
- Save – Saves the row set.
- Help – Opens the Sage Intelligence Help File.

Location: Sage 300 ERP > Intelligence Reporting > Report Manager > Designer > Demonstration Report Designer > Run > BI Tools > Quick Edit > Income Statement > Row Sets > Select Row Set

Report Designer - Balance Sheet

layout design row sets

← Income Statement

description	account rule
<input checked="" type="checkbox"/> Revenue	4000 to 4160
<input type="checkbox"/> Cost of Sales	5000 to 5051 + 5500 to 5600
<input type="checkbox"/> Other Revenue	4200 to 4240
<input type="checkbox"/> Other Expenses	5400 to 5450 + 6000 to 6140 + 6180 to 6280 + 6340 to 6760 + 8000
<input type="checkbox"/> Depreciation Expenses	6160
<input type="checkbox"/> Interest Expenses	6300 to 6320
<input type="checkbox"/> Gains and Losses	7100 to 7200
<input type="checkbox"/> Income Taxes	9000 to 9100
<input type="checkbox"/>	

Insert (+)
Clear (x)
Save (floppy disk)
Help (?)

account rule preview

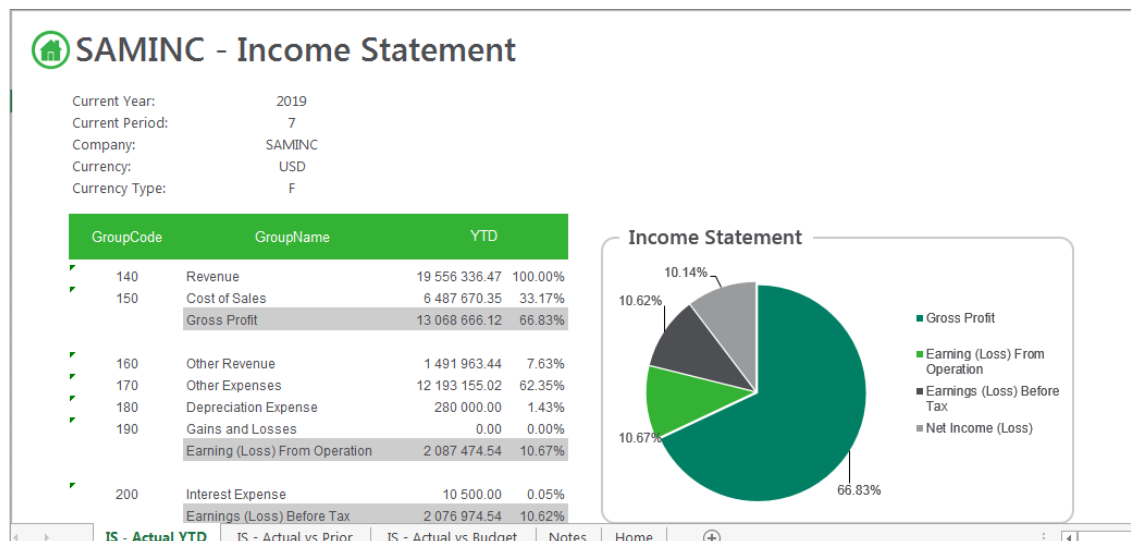
chart of accounts	account	account description
SAMINC	4000	Sales
SAMINC	4000-100	Sales
SAMINC	4000-100-10	Sales
SAMINC	4000-100-20	Sales
SAMINC	4000-200	Sales
SAMINC	4000-200-10	Sales

New Financial Reports

Income Statement

The new Financial Income Statement report contains sample Report Designer Income Statement layouts to assist you in getting started with your layout design.

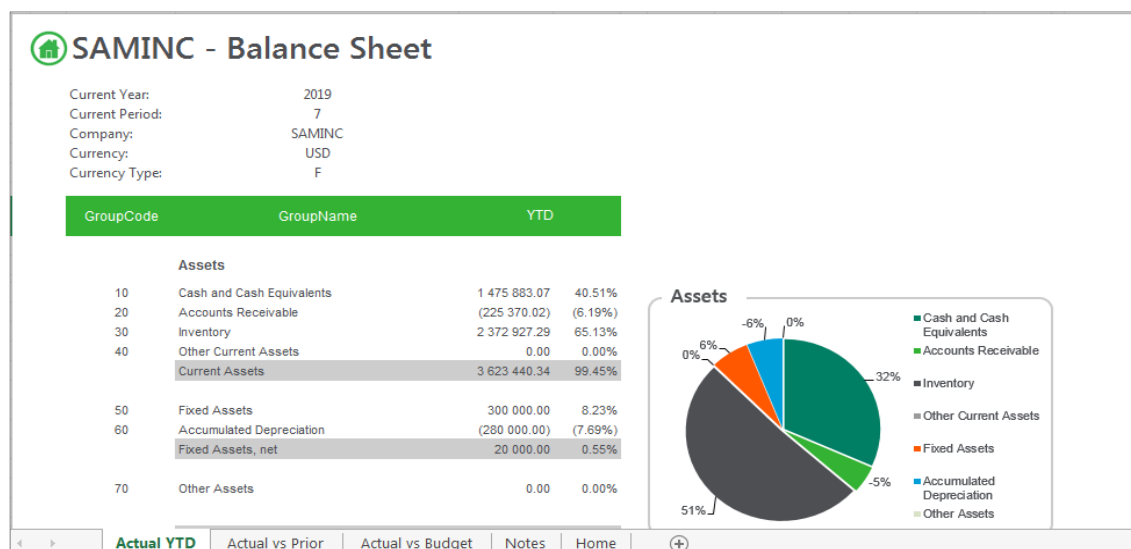
Location: Sage 300 ERP > Intelligence Reporting > Report Manager > Designer > Demonstration Report Designer > Run



Balance Sheet

The new Financial Balance Sheet report contains sample Report Designer Balance Sheet layouts to assist you in getting started with your layout design.

Location: Sage 300 ERP > Intelligence Reporting > Report Manager > Designer > Demonstration Report Designer > Run



Financial Ratios

The new Financial Ratios Report contains sample layouts to assist you in calculating and visualizing Financial Ratios, in order to make more informed business decisions.

Location: Sage 300 ERP > Intelligence Reporting > Report Manager > Designer > Demonstration Report Designer > Run

Financial Ratio Report				
2020				
Select the Financial Report year to display.				
KEY METRICS Click to change report Key Metrics				
Gross Profit (Loss)	8 245 271.37	Net Income (Loss)	-3 006 648.23	Total Assets
-37%		-252%		11 850 385.12
				225%
				Total Liabilities
				12 969 758.23
				682%
				Profit Before Interest and Tax
				-2 891 148.23
				-238%
ALL RATIOS Do not modify the information below. Click to enter				
	2020	2019	Variance	Benchmark
Profitability Ratios				
Profit Margin	(23.22%)	10.14%	(33.36%)	6.50%
Return on Assets (ROA)	(25.37%)	54.45%	(79.83%)	10.00%
Return on Equity (ROE)	268.60%	100.00%	168.60%	15.00%
Dividend Coverage	-	-	-	2.00
Gross Margin %	63.68%	66.83%	(3.15%)	30.00%
Return on Capital Employed (ROCE)	218.47%	109.87%	108.60%	19.00%
Ratio Trend FinancialData Financial Report Settings Financial Ratio Report Ratio Charts Notes Home				

Financial Forecasting

The new Financial Forecasting report provides you with sample layouts aimed at projecting growth from the prior to current year and allows for you to input adjustments in growth percentages. The Financial Forecasting report is for General Ledger only and is based on the standard Sage FR GL Forecasting template, "Forecast.xls".

Location: Sage 300 ERP > Intelligence Reporting > Report Manager > Designer > Demonstration Report Designer > Run

SAMINC Balance Sheet Forecast						
Current Period:		7				
Company:		SAMINC				
Currency:		CAD				
Currency Type:		F				
GroupCode	GroupName	Year		Projected		
		2020	2021	2022	2023	2021
Assets						
10	Cash and Cash Equivalents	1475 883.07	8 362 104.42	30 164 134.41	44 539 727.70	54 157 738.95
	Accounts Receivable	(225 370.02)	259 472.47	171 801.12	115 752.43	75 317.41
30	Inventory	2 372 327.29	2 052 761.48	1 359 168.17	839 928.28	595 857.77
	Current Assets	3 623 440.34	10 674 338.37	31 695 163.70	45 615 408.42	54 628 914.13
50	Fixed Assets	300 000.00	1 901 046.75			
60	Accumulated Depreciation	(280 000.00)	(725 000.00)			
	Fixed Assets, net	20 000.00	1 176 046.75	1 176 046.75	1 176 046.75	1 176 046.75
70	Other Assets	0.00	0.00			
	Total Assets	3 643 440.34	11 850 385.12	32 871 210.45	46 789 455.17	56 004 960.88
Liabilities						
30	Other Current Liabilities	(125 532.40)	144 264.27	30 489 607.37	50 581 773.34	63 885 136.95
80	Accounts Payable	1 868 938.20	13 029 433.36	8 627 048.78	5 712 115.21	3 792 088.29
	Total Current Liabilities	1 743 405.80	13 173 758.23	39 116 656.15	56 293 888.55	67 667 225.24
	Long Term Liabilities	(84 000.00)	(204 000.00)	(3 140 470.74)	(5 084 757.78)	(6 372 103.19)
	Total Long Term Liabilities	(84 000.00)	(204 000.00)	(3 140 470.74)	(5 084 757.78)	(6 372 103.19)
	Total Liabilities	1 659 405.80	12 969 758.23	35 976 185.41	51 209 130.76	61 295 122.05
	Shareholders Equity	0.00	1 887 275.12	(1 119 373.11)	(3 104 974.36)	(4 419 675.60)
	Dividends	0.00	0.00	0.00	0.00	0.00
	Profit (Loss) for Period	1 983 974.54	(3 006 648.23)	(1 385 601.85)	(1 314 700.64)	(870 485.57)
	Shareholders' Equity	1 983 974.54	(1 119 373.11)	(3 104 974.36)	(4 419 675.60)	(5 290 161.17)
Income Statement Balance Sheet Notes Home						

Report Manager and Connector Ribbon

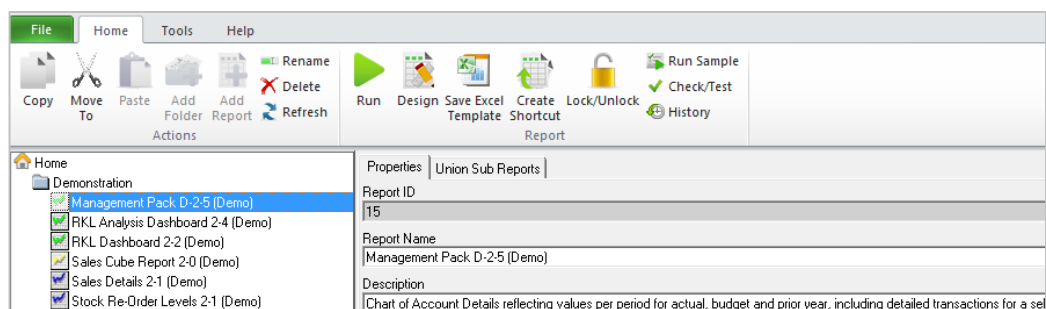
The Sage Intelligence Report Manager and Sage Intelligence Connector modules boast a new Ribbon feature, with informative icons and labels for each function. These new icons assist you with easily identifying and accessing the features that you require.

Easy Access to Commonly Used Report Manager Features

Report Manager menu items have been restructured and grouped to enable you to easily identify the features that you wish to utilize. Commonly used menu items are now accessible from the 'Home' and 'Help' tabs. All existing functionality and business logic remain as in Sage Intelligence Reporting 7.2.1.

The functions on the Home tab have been grouped into 'Action' functions and 'Report' functions for ease of use.

Location: Sage 300 ERP > Intelligence Reporting > Report Manager > Home

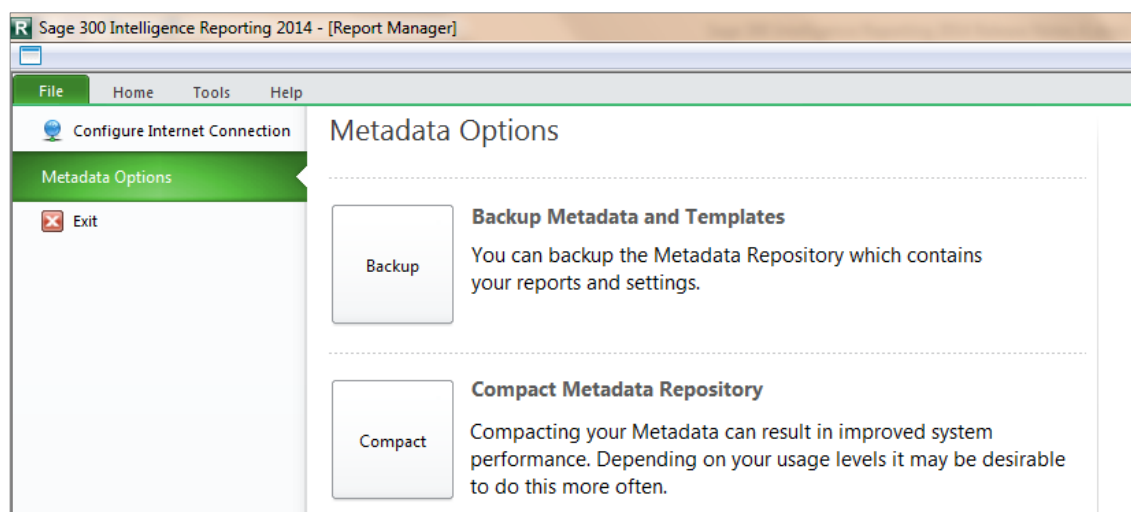


Easy Access to Less Commonly Used Report Manager Features

The Report Manager's less commonly used menu items are now accessible from the 'File' and 'Tools' tabs.

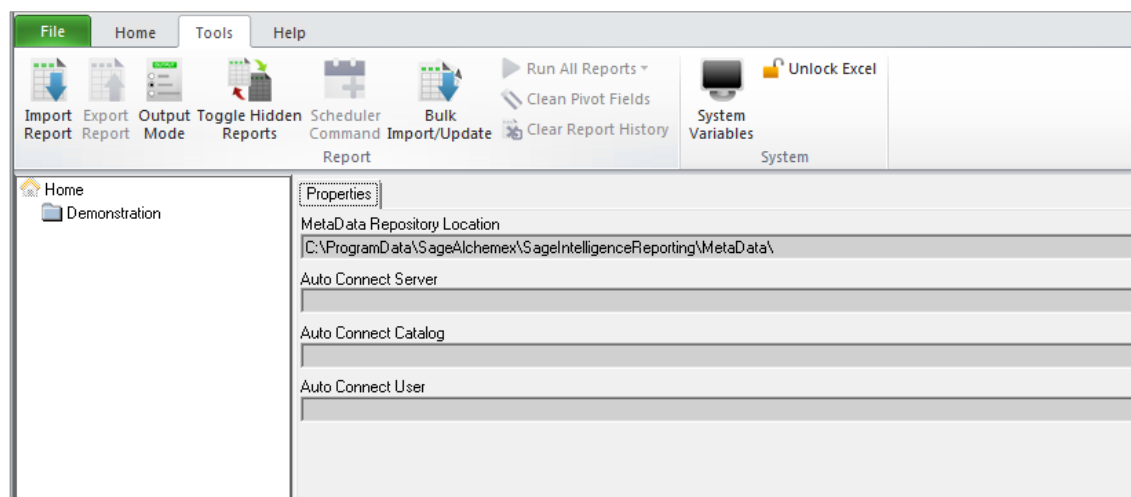
The File tab has been visually aligned to a more familiar interface for a File menu item and existing features, such as 'Configure Internet Connection' and 'Metadata Options' have been grouped for ease of use. Metadata Options allows you to backup Metadata and Templates, change your Metadata Repository as well as compact your Metadata to improve performance.

Location: Sage 300 ERP > Intelligence Reporting > Report Manager > File



The functions on the Tools tab have been grouped into 'Report' functions and 'System' functions for ease of use.

Location: Sage 300 ERP > Intelligence Reporting > Report Manager > Tools



The Report functions grouping on the Tools tab includes the following existing Report Manager features, which allow you to perform more advanced management functions in the Report Manager:

- Import Report
- Export Report
- Output Mode
- Toggle Hidden Reports, previously labeled as Show/Hide Hidden reports
- Scheduler Command
- Bulk Import/Update
- Run All Reports, previously labeled as Run Report Batch
- Clean Pivot fields
- Clear Report History, previously labeled as Purge Instance History

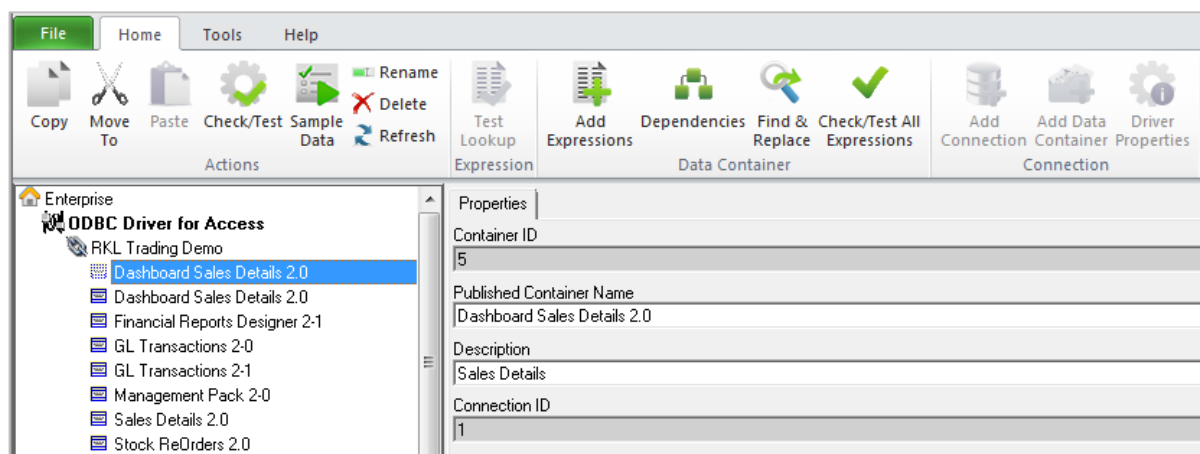
The System functions grouping on the Tools tab allows you to view System Variables and Unlock Excel.

Easy Access to Commonly Used Connector Features

The Connector module boasts a new Ribbon feature with informative icons and labels for each feature, promoting ease of use.

Connector menu items have been restructured and grouped to allow you to easily identify the features you wish to use. The commonly used menu items are now accessible from the File, Home and Help tabs.

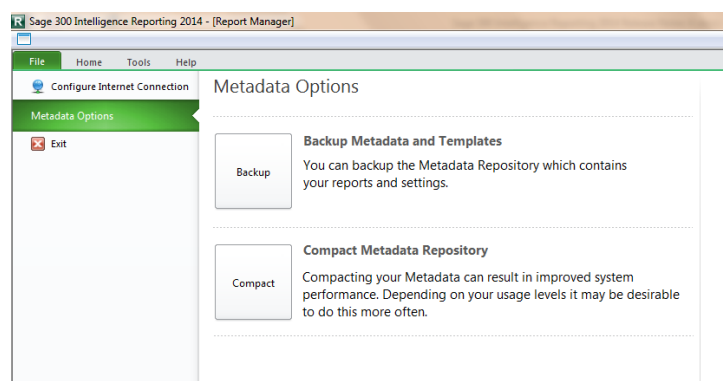
Location: Sage 300 ERP > Intelligence Reporting > Connector > Home



The Connector File tab has been visually aligned to a familiar interface for a File menu. The functions on the Connector File tab have been grouped into 'Configure Internet Connection' and 'Metadata Options' functions for ease of use.

Metadata Options allows you to backup Metadata and templates, change their Metadata Repository as well as compacting their Metadata to improve performance.

Location: Sage 300 ERP > Intelligence Reporting > Connector > File



The Connector Home tab contains further logical grouping of features, including Action functions, Expression functions, Data Container functions and Connection Functions. All icons on the Home tab ribbon are visible in windowed mode.

Actions Functions grouping includes basic container and expression management features allowing for the ability to:

- Copy
- Move To
- Paste
- Check/Test
- Sample Data
- Rename
- Delete
- Refresh

Expression Function grouping includes the ability to perform a Test Lookup for Expressions.

Data Container functions grouping allows users to modify containers' expressions and includes the following existing Connector features:

- Add Expressions
- Dependencies
- Find and Replace
- Check/Test All Expressions

Connection function grouping enables modification of drivers and connections and includes the following existing features:

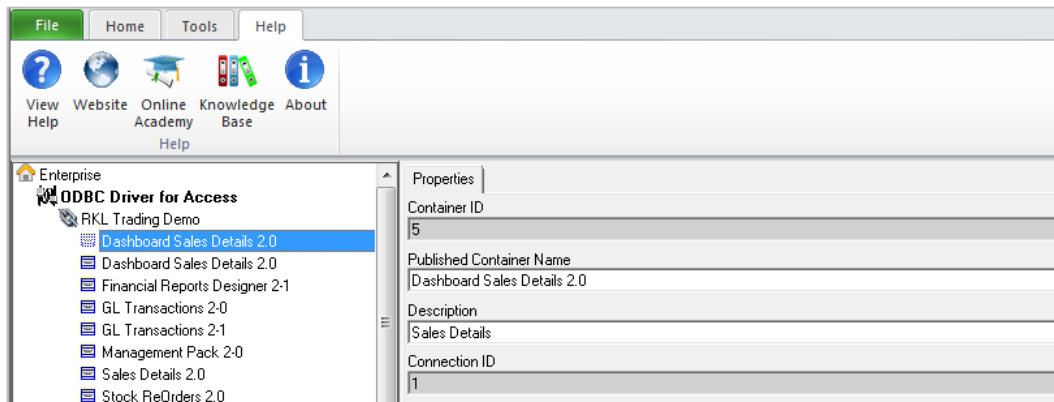
- Add Connection
- Add Data Container
- Driver Properties

The Connector Help tab aims to provide the user with informative resources which will guide the utilization and promote the understanding of the software. It contains features from the existing help drop down menu:

- View Help

- Website
- Online Academy
- Knowledge Base
- About

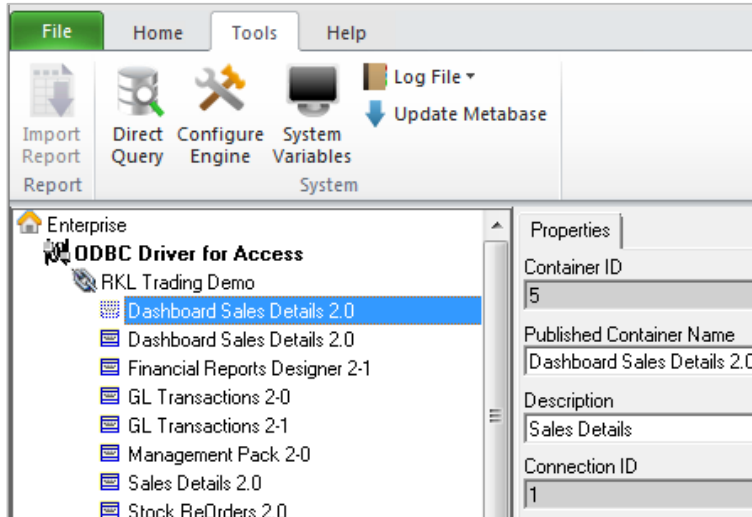
Location: Sage 300 ERP > Intelligence Reporting > Connector > Help



Easy Access to Less Commonly Used Connector Features

The Connector's less commonly used features are now accessible from the Tools tab in the new Connector Ribbon menu. All icons on the Tools tab ribbon menu are visible in windowed mode. The Tools tab functions have been grouped together, and include Report functions and System functions.

Location: Sage 300 ERP > Intelligence Reporting > Connector > Tools



Report feature grouping contains the existing Import Report feature.

The System feature grouping includes the following existing Connector features:

- Direct Query, previously labeled Direct Query Tool
- Configure Engine, previously labeled Configure Output Engine
- System Variables
- Log File drop down with options Open and Delete
- Update Metabase

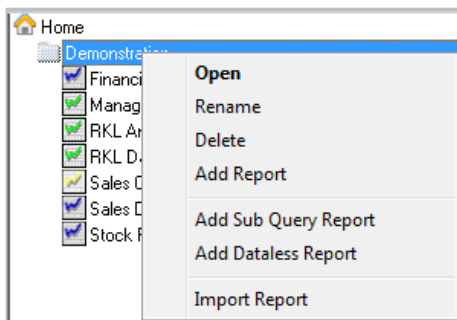
Report Manager Context Menus

Folder context right-click menu simplified

The right-click menus in the Report Manager have been simplified to provide the you with a more concise list of options and option labels that are more informative.

The right-click options 'Run Report Batch', 'Run Report Batch (Mode 2)', 'Properties' and 'Refresh' on the folder context right-click menu have been removed to help simplify the list of relevant options available. The Refresh feature is still accessible in the Report Manager ribbon via the Home tab and Run Report Batch and Run Report Batch (Mode 2) are available under the retitled 'Run All Reports' option under the Tools ribbon tab.

Location: Sage 300 ERP > Intelligence Reporting > Report Manager > Home > Right-click any folder

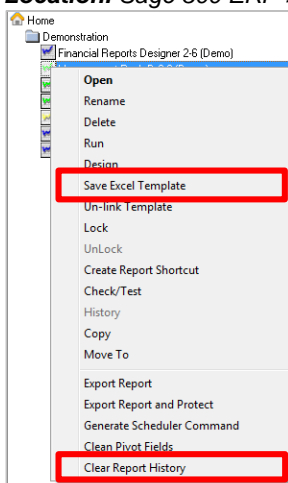


Report context right-click menu simplified

The right-click options 'Run Sample' and 'Refresh' on the Report context right-click menu have been removed and are now accessible in the Report Manager Ribbon via the Home tab.

The labels 'Create and Link Template' and 'Purge Instance History' have been replaced by the easily understandable labels of 'Save Excel Template' and 'Clear Report History' respectively.

Location: Sage 300 ERP > Intelligence Reporting > Report Manager > Home > Right-click any folder



Improvements

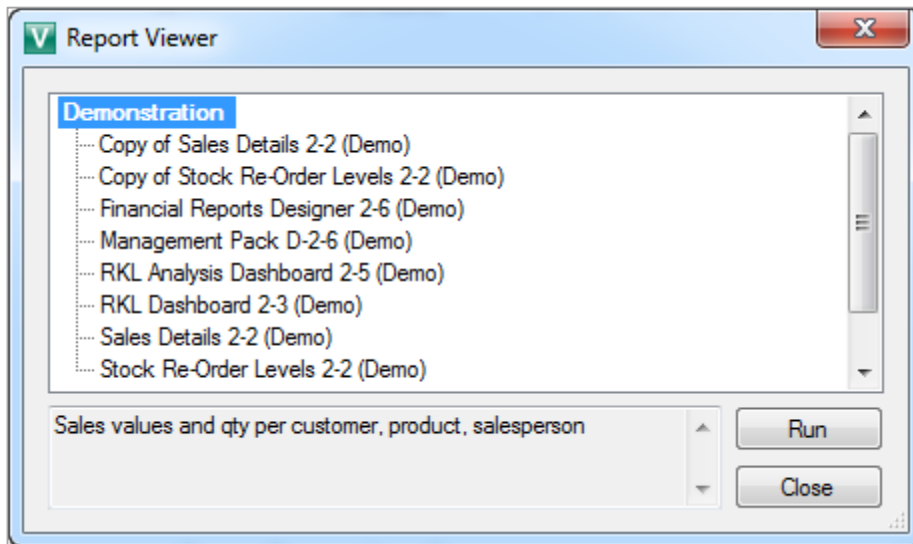
Usability Improvements

Report Viewer Usability

Intelligence Reporting includes the following usability enhancements to the Sage Intelligence Report Viewer module.

- The Report Viewer remains open after running a report thereby allowing you to run multiple reports without having to reopen the Report Viewer.
- Report Viewer window size persistence has been introduced.
- A minimum window size has been enforced to ensure that all available reports are visible.

Location: Sage 300 ERP > Intelligence Reporting > Report Viewer

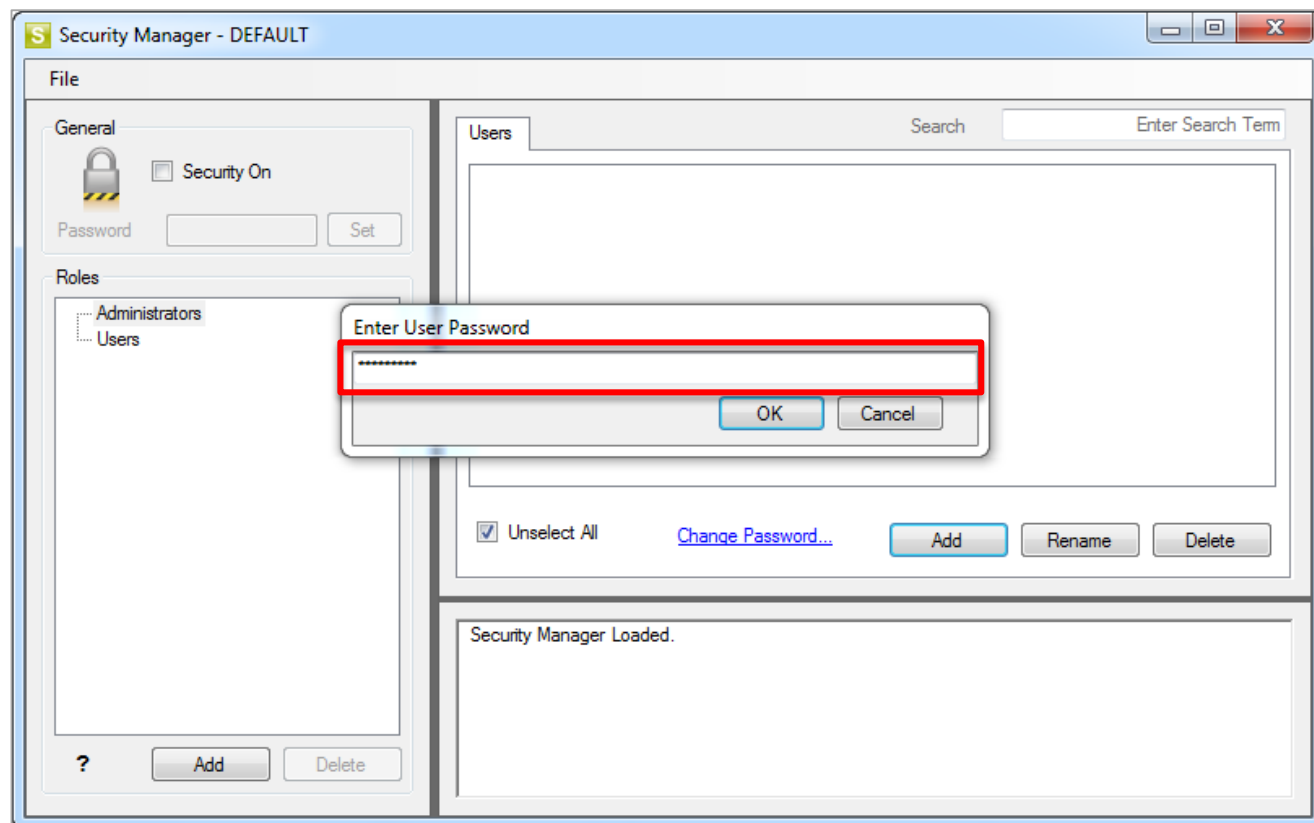


Security Manager

Intelligence Reporting includes an enhancement to the Sage Intelligence Security Manager module to display the user input for setting new and updating existing passwords in asterisk and not in plain text.

Location: Sage 300 ERP > Intelligence Reporting > Security Manager > Add User

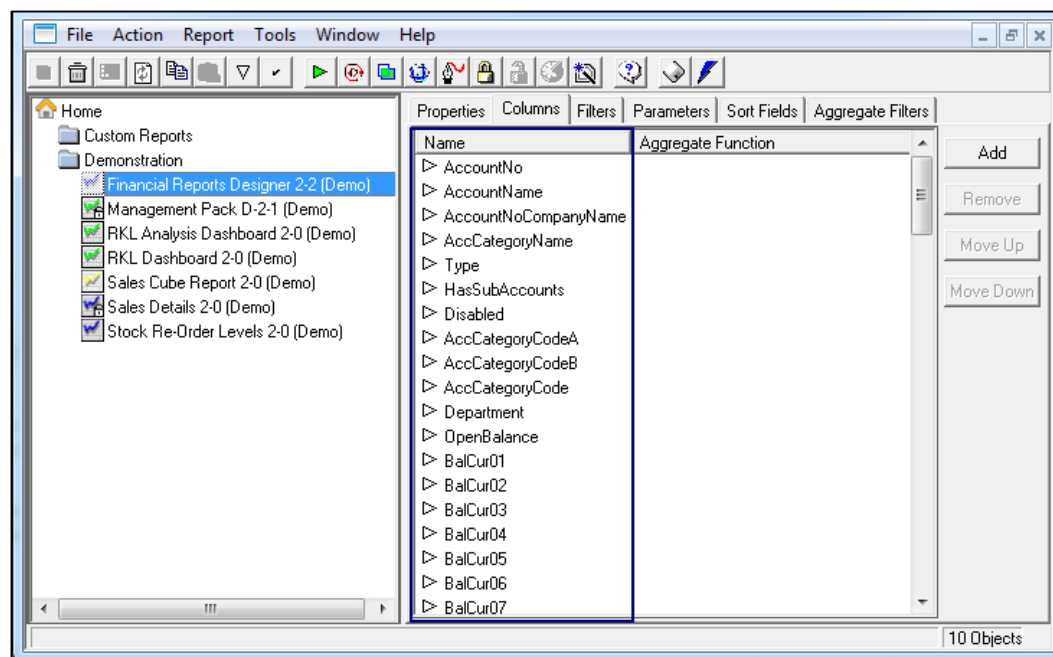
Location: Sage 300 ERP > Intelligence Reporting > Security Manager > Change Password



Improve Behavior of Report Property Columns

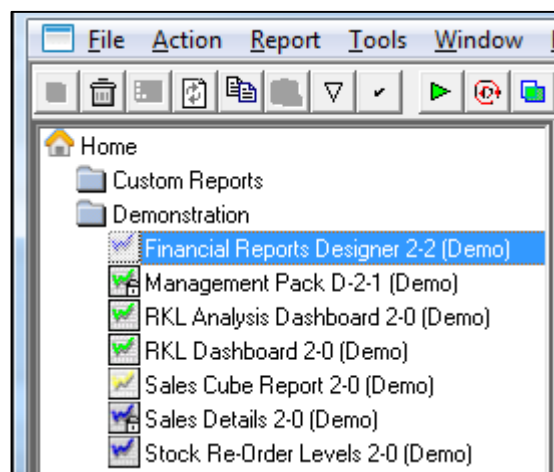
The tabs which appear when a report is selected within the Report Manager contain table grids to display data for columns, filters, parameters, sort fields and aggregate filters. The columns within these grids have been enhanced to automatically resize themselves to ensure they are displaying all text values fully. Previously, if a text value was longer than the default column size it would be cut off, forcing a manual resize each time a tab was selected to view the text.

Location: Sage 300 ERP > Intelligence Reporting > Report Manager > Report > Columns / Filters / Parameters / Sort Fields / Aggregate Filters



Improve Reports Tree Header

Within the Report Manager, the reports listing tree previously displayed a header which was incorrectly sized and allowed users to unnecessarily change the width of the viewable tree area. This header has been removed to promote a cleaner user interface and less confusion on how to change the width of the viewable tree area.

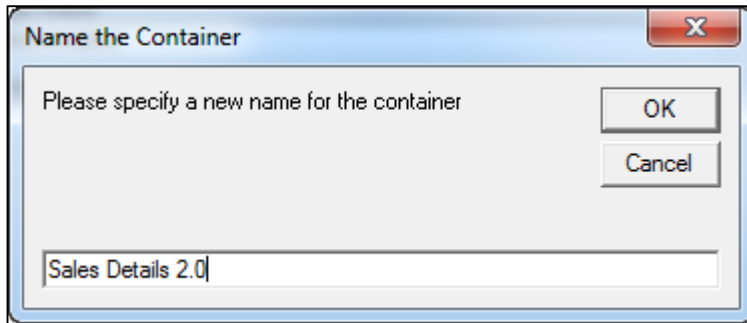


Ability to Rename a Duplicate Container When Importing

When importing a report which contains a Container with the same name as an existing Container, the system will now allow the incoming Container to be renamed. Previously the system would create a duplicate named Container, making it challenging to identify the new Container.

Location: Sage 300 ERP > Intelligence Reporting > Report Manager > Right-click on folder > Import Report

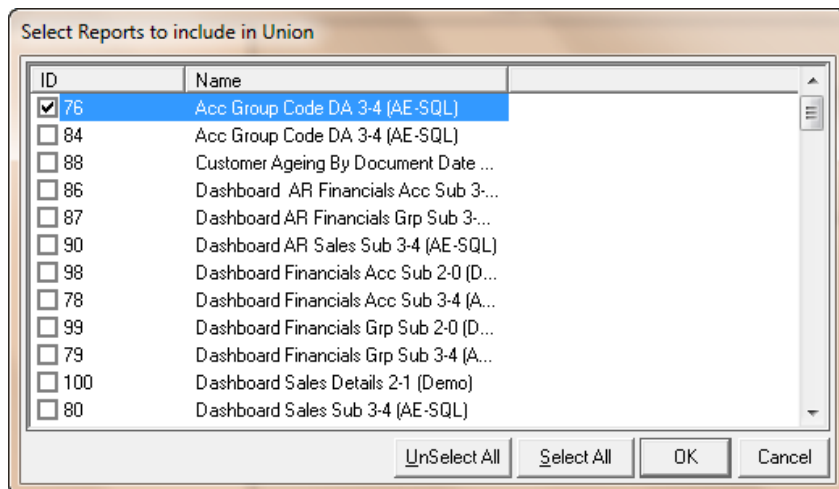
Location: Sage 300 ERP > Intelligence Reporting > Connector > Right-click on Connection > Import Report



Creating Union Reports

The Report ID has been introduced to the user interface to assist you with creating Union reports by allowing you to easily and accurately identifying the sub reports used to create Union reports.

Location: Sage 300 ERP > Intelligence Reporting > Report Manager > Right-click on folder > Add Report > Union Report > Enter Report Name > OK

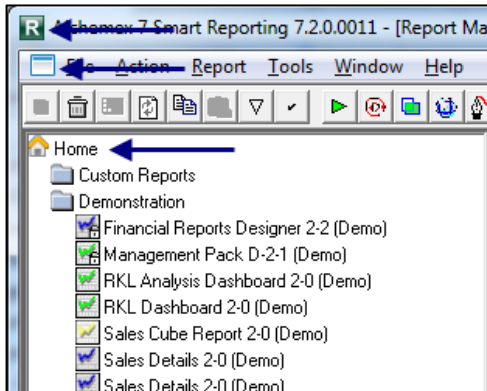


User Interface Modernization

Replace Configurable Icons with Professional Standard Icons

Certain icons within the system were previously configurable to each implementation, support for configuration of these icons has been removed and the icons have been replaced with newer, professional looking icons to ensure a consistent look and feel of this application for you regardless of which integrated system you are using it with. Additionally the menu bar and Home node icons have been standardized across all modules.

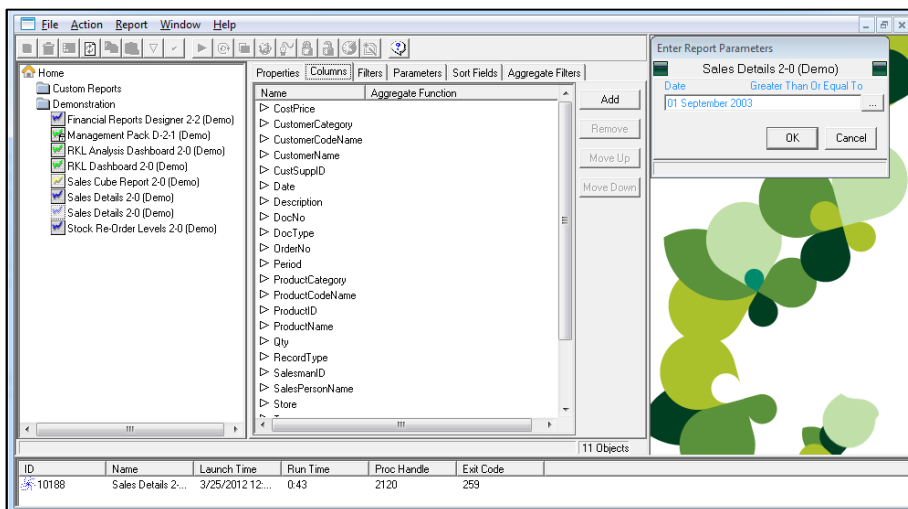
Location: Sage 300 ERP > Intelligence Reporting > Connector / Report Manager / Report Viewer / License Manager / OLAP Manager / Security Manager Windows Taskbar > Module Icons



Report Manager Background Change

The background of the Report Manager has been updated to promote a more modern and comfortable environment and align the system with Sage branding.

Location: Sage 300 ERP > Intelligence Reporting > Report Manager > Run Report

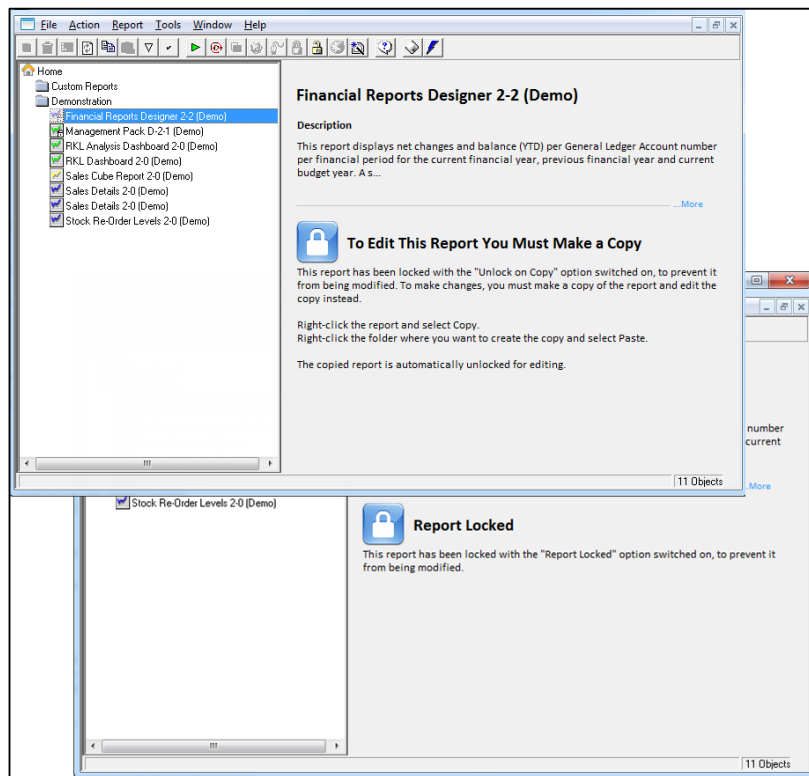


Improve Locked Report Properties Panel

The 'Locked Report' screen and the 'Unlock on Copy' screen have been revamped to present information and instructions in a friendly and modern manner. This purpose of this revamp is to ensure that you are not overburdened with information that you do not necessarily wish to see and are presented with a professional screen to encourage a more comfortable experience.

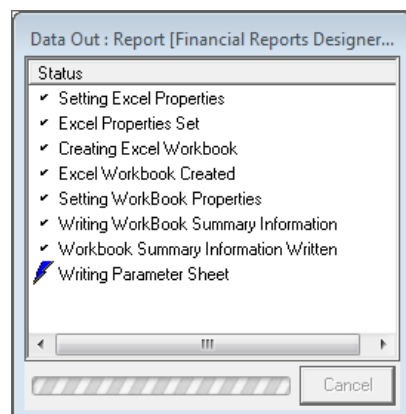
Location: Sage 300 ERP > Intelligence Reporting > Report Manager > Right-click report > Lock Report

Location: Sage 300 ERP > Intelligence Reporting > Report Manager > Report > Properties Tab > Show Advanced Options > Check 'Unlock on Copy' > Right-click report > Lock Report



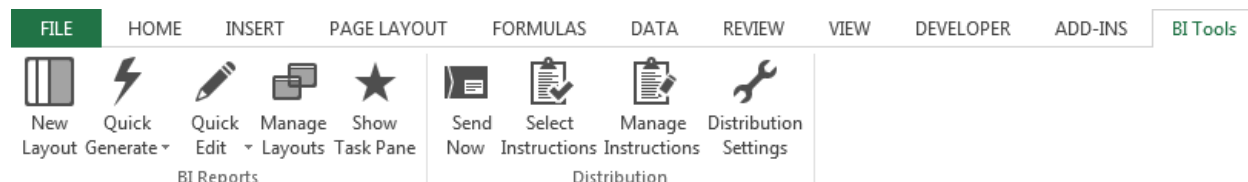
Enhanced Report Execution Progress Indicator

A new Progress Indicator has been implemented to replace the older styled moving icon, resulting in a more modern look and feel.



Modernized BI Tools Report Designer Ribbon

The BI Tools Ribbon has been updated to include new modern icons to improve the consistency and familiarity with Microsoft Office. The Reporting Trees are no longer available from the Ribbon and are accessible from the Report Designer Task Pane. The Mapping Tool and What-if Analyzer features no longer apply to the Report Designer and are therefore no longer displayed on the BI Tools ribbon.



Multi-language Support

Excel Components Now Support Multi-language Implementation

All components located under the 'BI Tools' tab within Excel (Report Designer, Tools, Distribution) have been upgraded to support the implementation of different languages. Previously these components only supported being deployed in English. This change will significantly decrease the time needed to implement this application in different languages.

NOTE: These Excel components do not yet support implementations of all Unicode languages. Currently only **French** is fully supported, as more languages are implemented and tested – they will be fully supported.

Support for Excel 2010 64 Bit Edition

Intelligence Reporting is now compatible with the 64-bit edition of Microsoft Excel 2010. Processors that are 64-bit are becoming the standard for systems that range from servers to desktop computers.

These 64-bit systems can use more virtual and physical memory than 32-bit systems. This lets you work with much larger data sets than you could previously and to analyze and solve large computational problems. Microsoft Office 2010 introduces a native 64-bit version of Microsoft Excel to take advantage of this larger capacity and now you can use Intelligence Reporting with this version too.

NOTE: The option to 'Use my Outlook Profile' within the 'Distribution Settings' form is not supported when using the 64-bit edition of Microsoft Outlook 2010. The 'SMTP / Exchange Server' option must be used instead.

Upgrade to Microsoft .NET Framework 4.0

The entire Intelligence Reporting product stack has been moved onto .NET Framework 4.0.

Optimized Installation

If you already have the .NET Framework 4.0 installed, the installation process for Intelligence Reporting is now much faster than before.

Easy Integration with .NET 4.0 Accounting and ERP Systems

Intelligence Reporting can now be integrated with Accounting/ERP systems which have moved onto .NET Framework 4.0 without the need for any additional customized integration development.

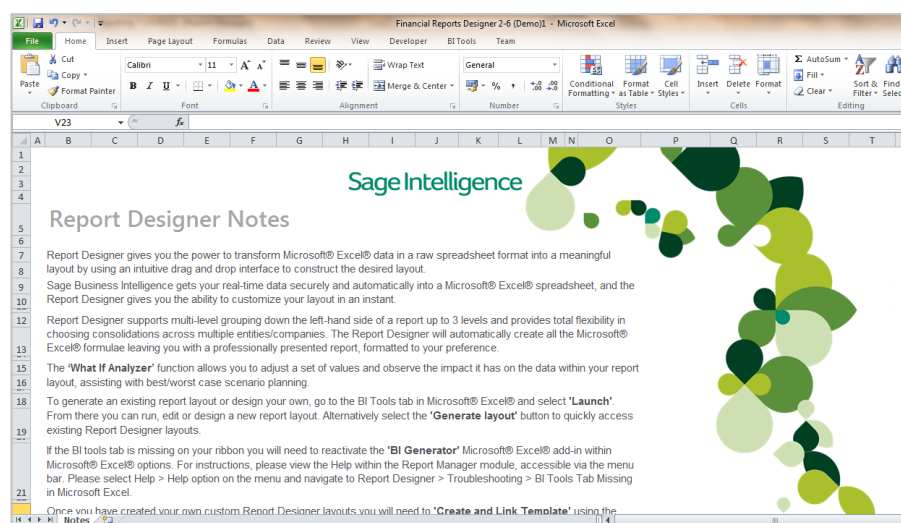
Smoother Integration with Microsoft Excel

Being on the latest .NET Framework allows Intelligence Reporting to leverage the most stable integration technologies available for Microsoft Excel, resulting in a better experience inside Excel when using the 'BI Tools' features.

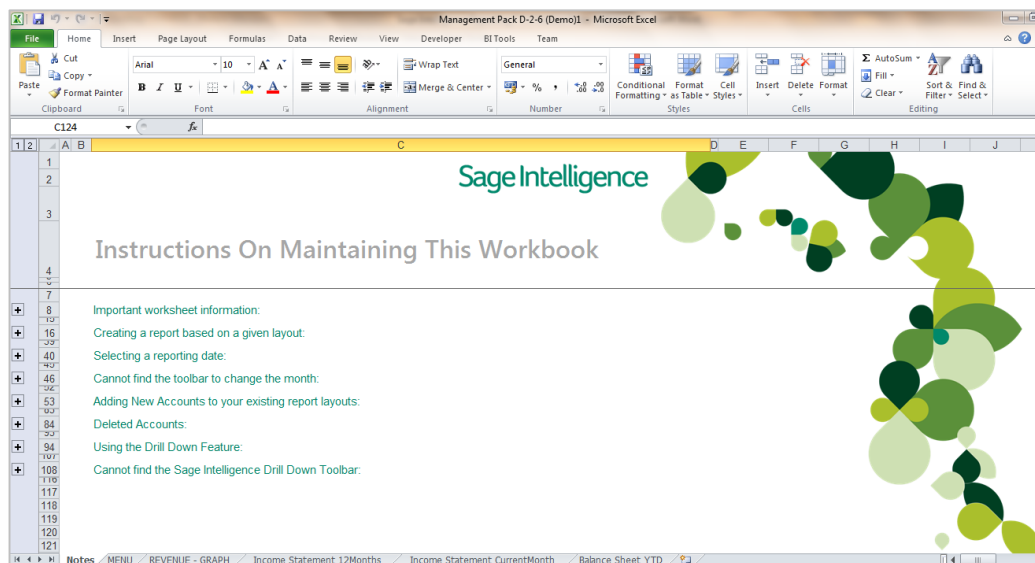
Demonstration Reports

The Intelligence Reporting Demonstration reports have an updated look and feel.

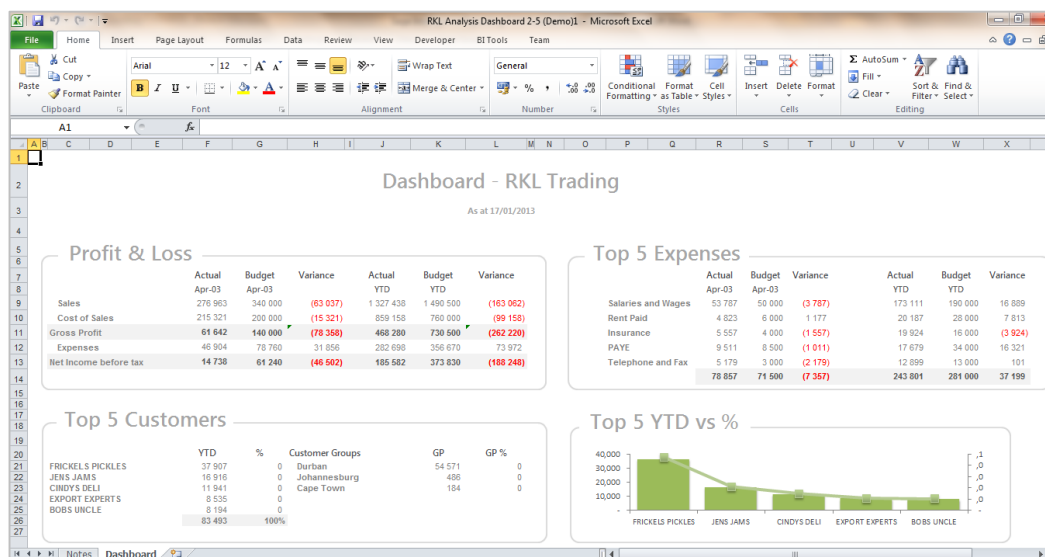
Location: Sage 300 ERP > Intelligence Reporting > Report manager > Home > Demonstration > Financial Report Designer 2-6 > Run Financial Report Designer 2-6



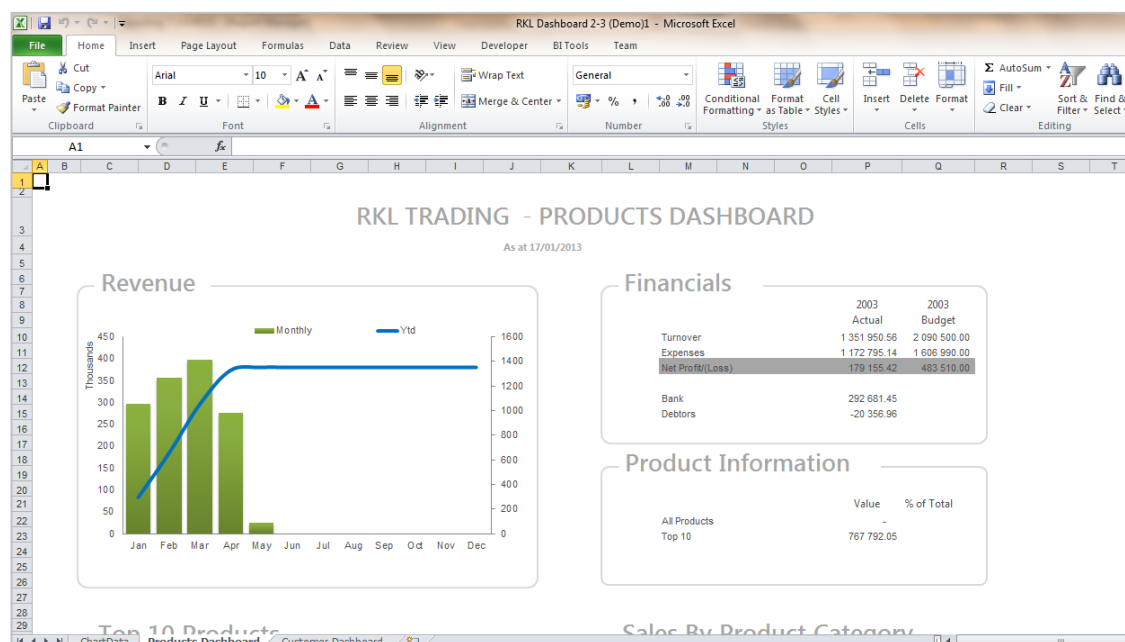
Location: Sage 300 ERP > Intelligence Reporting > Report manager > Home > Demonstration > Management Pack D-2-6 > Run > Management Pack D-2-6



Location: Sage 300 ERP > Intelligence Reporting > Report manager > Home > Demonstration > RKL Analysis Dashboard 2-4 > Run > RKL Analysis Dashboard 2-4



Location: Sage 300 ERP > Intelligence Reporting > Report manager > Home > Demonstration > RKL Dashboard 2-3 > Run



Location: Sage 300 ERP > Intelligence Reporting > Report manager > Home > Demonstration > Sales Details 2-2 > Run > Sales Details 2-2

Sales Report
For the period to date from 01 Sep 2003

SalesPersonName (All)
Store (All)
Period (All)
CustomerCategory (All)

CustomerCodeName	ProductCategory	ProductCodeName	Qty	Total Cost	Total Sale	GP	GP%
FRUI01-FRUIT JOES	ALCOHOL		76	14 192.01	18 800.61	4 608.59	24.51%
		CPTV01-Captain Vital Signs Car	23	361.45	486.03	124.57	25.63%
		YARD02-Yardville Lager	3	227.97	316.22	88.25	27.91%
			20	133.49	169.81	36.32	21.39%
	BEVERAGES		31	4 263.04	5 796.39	1 513.35	26.11%
		CRYS03-Crystal Puddle Ranber	31	4 263.04	5 796.39	1 513.35	26.11%
	FRESH PRODUCE		6	6 331.31	8 245.16	1 913.85	23.21%
		ARCH01-Archies Red Apples	6	6 331.31	8 245.16	1 913.85	23.21%
	MEATS		6	21.52	50.32	28.80	57.23%
		RONA02-Ronalds Dried Ham	6	21.52	50.32	28.80	57.23%
	OTHER		10	3 194.69	4 222.71	1 028.02	24.35%
		BX0008-B & X Sesames	4	470.93	645.16	174.23	27.01%
		BX0009-B & X Wholenuts	3	2 358.70	3 077.42	718.72	23.35%
			2	205.00	500.42	295.42	27.04%

SALES REPORT TOP 5 - GP% TOP 5 - VALUE PRODUCT CATEGORIES - VALUE

Location: Sage 300 ERP > Intelligence Reporting > Report manager > Home > Demonstration > Stock Re-order Levels 2-2 > Run > Stock Re-order Levels 2-2

Stock Re-Order Levels 2-2 (Demo)1 - Microsoft Excel

Stock Re-Order Report										
As at 17/01/2013										
StoreName (All)										
CategoryName	ProductCodeName	ZeroFilter	Open SOH	Purchases	Adjustments	Sales	SOH	MaxLevel	ReorderLevel	ReOrderQty
ALCOHOL										
	001 - Captain Vital Signs Ca		0	0	6	0	6	0	0	0
	001 - Captain Vital Signs Ru		0	0	6	0	6	0	0	0
	001 - Captain Vital Signs Sa		0	0	0	0	0	0	0	0
	001 - Jaque Ferrits Ale		0	0	0	0	0	0	0	0
	001 - Jaque Ferrits Lager		0	0	0	0	0	0	0	0
	001 - Jaque Ferrits Port		0	0	0	0	0	0	0	0
	001 - Jaque Ferrits Sherry		0	0	0	0	0	0	0	0
	001 - Mexi Cactus Drops		0	0	9	0	9	0	0	0
	001 - Redberg Brandy		0	0	0	0	0	0	0	0
	001 - Redberg Cane		0	0	8	0	8	0	0	0
	001 - Redberg Cider		0	0	6	0	6	0	0	0
	001 - Redberg Rum		0	0	0	0	0	0	0	0
	001 - Redberg Sambuca		0	0	0	0	0	0	0	0
	001 - Redberg Tequila		1	4	0	0	4	5	0	0
	001 - Redberg Vodka		0	0	0	0	0	0	0	0
	001 - Redberg Whisky		1	12	83	-2	78	15	25	10
	001 - Redberg Whisky		0	0	0	0	0	0	0	0
	001 - Ricky Liquors - Brand		0	0	0	0	0	0	0	0
	001 - Ricky Liquors - Vodka		1	-2	20	19	21	16	25	0

Resolved Issues

Ability to disable Direct Query Tool

Security Manager

Ability to disable access to reports

You are now able to limit access to reports based on Security Manager Roles. For more information on how to limit access to reports please refer to the Intelligence Reporting Help File.

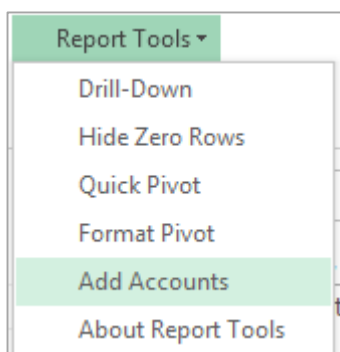
Ability to access Security Manager

You may have experienced an issue when launching the Security Manager module. This has been resolved.

Add Accounts on a Secondary Monitor

Users making use of the old Financial Report Designer reports are now able to view the Add Accounts pop-up windows on a secondary monitor.

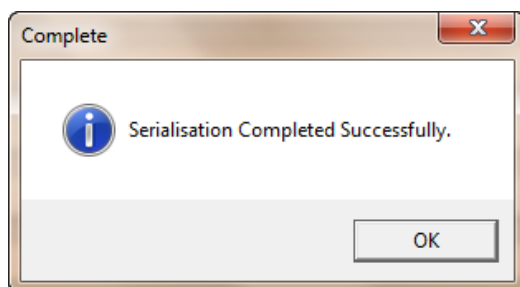
Location: Microsoft Excel > Add-Ins Tab > Report Tools > Add Accounts



License Manager Confirmation pop-up Window

The serialization confirmation pop-up is displayed each time after you serialize your software and not only after the first successful serialization.

Location: Sage 300 ERP > Intelligence Reporting > License Manager > Serialise



Known Issues

Multiple Installations of Microsoft Excel

You may experience an issue with the loading of the Report Designer Task Pane Excel add-in when earlier versions of Excel are installed after later versions of Excel, on the same machine. You will be able to load the Task Pane manually. For more information on how to manually load the Task Pane please refer to the Sage Intelligence Knowledgebase article "[Report Designer Task Pane Missing or Closed](#)".

Balance Drill Down using Account Exclusion rules

In certain instances where you have made use of an exclusion in your account and Row Set rules, for example accounts 1000 TO 2000 – 1090 where account 1090 is the exclusion account, the drill down to balance will not omit the exclusion account(s) and will therefore display the exclusion account(s) along with the associated balance amount(s).

Running Reports after Installation

If you have not installed the software you must launch Excel before running any report in the Designer folder, in Report Viewer or Report Manager.

Running Reports from Report Manager

When Report Viewer is opened no 'Open File – Security Warning' message is displayed as before and Report Viewer opens. The 'Open File – Security Warning' message is now displayed before running each report in Report Viewer. Clicking 'Run' allows the user to run the report and this has to be done for each report the user selects to run.

Bulk Import for Consolidated Reports

When upgrading, the Bulk Import feature does not import reports on the consolidation connection. This is as designed. In order to run consolidation reports for more than one company, please manually import the consolidated reports onto the consolidation connection from the Report Update folder.

System Requirements

- Operating Systems: Windows 7 (32 and 64-bit), Windows 8 (32 and 64-bit), Windows server 2008, Windows Server 2012 or Windows Terminal Server.
- Microsoft .Net Framework 4.0
- Microsoft Excel 2007 and higher
- Hardware CPU > 1.3 GHz
- Memory: A minimum of 2 GB RAM is recommended. This will vary depending on the data volumes you are reporting on.
- Hard Drive Space: 350 MB